

MACKINAC COUNTY ROAD COMMISSION  
ST. IGNACE, MICHIGAN  
CERTIFICATION AS OF DECEMBER 31, 2023

<u>TOWN/RANGE</u>	<u>TOWNSHIP</u>	<u>SHT NO.</u>	<u>TOWN/RANGE</u>	<u>TOWNSHIP</u>	<u>SHT NO.</u>
T39 R1W, R2W	BOIS BLANC	1-2	T41-42N R1W, R1E	CLARK	16-17
T40 R3W, R4W	MORAN	3	T43N R12W, R11W	NEWTON	18-19
T40 R2W, R3W	MACKINAC ISLAND	4	T42-43N R10W, R9W	GARFIELD	20-21
T41N R5W	MORAN & BREVORT	5	T42-43N R8W	HUDSON	22
T41N R4W	ST. IGNACE, MORAN & BREVORT	6	T43N R7W	HENDRICKS	23
T41N R2E	CLARK	7	T43N R6W	MORAN	24
T41-42N R12W, R11W	NEWTON	8-9	T43N R5W	BREVORT & MORAN	25
T42N R7W	HENDRICKS	10	T43N R4W	BREVORT & ST. IGNACE	26
T42N R6W	MORAN	11	T43N R3W	ST. IGNACE	27
T42N R5W	BREVORT & MORAN	12	T43N R2W, R1W	MARQUETTE	28-29
T42N R4W	BREVORT & ST. IGNACE	13	T44N R12W, R11W	PORTAGE	30-31
T41-42N R3W	ST. IGNACE	14	T42N R10W, R9W	GARFIELD	32-33
T41-42N R2W	MARQUETTE	15	T44N R8W	HUDSON	34
			T44N R7W	HENDRICKS	35

I CERTIFY THAT ALL OF THE ROADS ON WHICH LENGTHS HAVE BEEN ENTERED ALONG THE ROAD BANDS OF THE ATTACHED TOWNSHIP AND ENLARGED SECTION MAPS ARE NORMALLY OPEN TO AUTOMOBILE TRAFFIC DURING THE MONTHS OF MAY THROUGH OCTOBER AND ARE UNDER THE JURISDICTION OF THE COUNTY ROAD AGENCY.

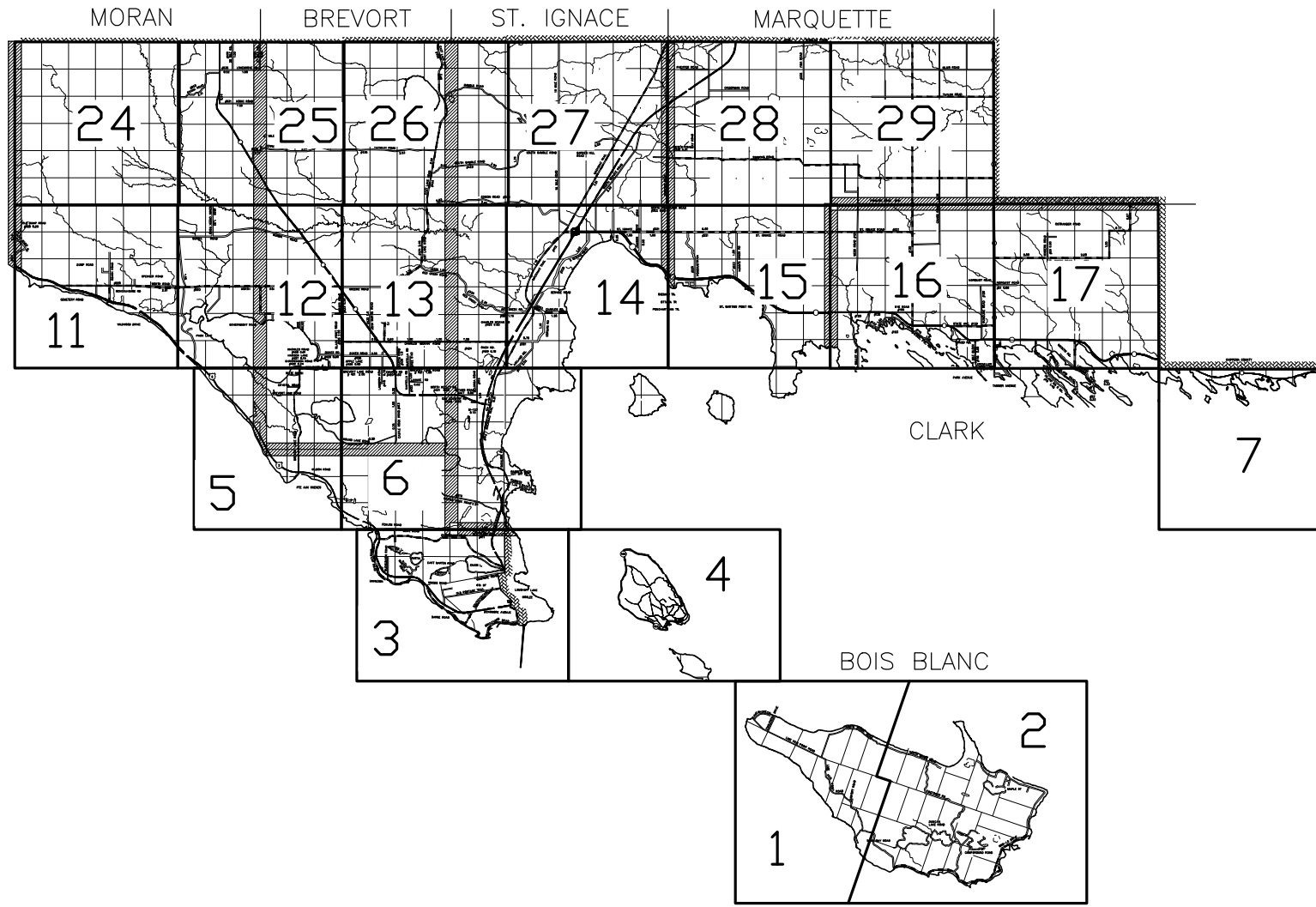
  
MACKINAC CRC CHAIRMAN

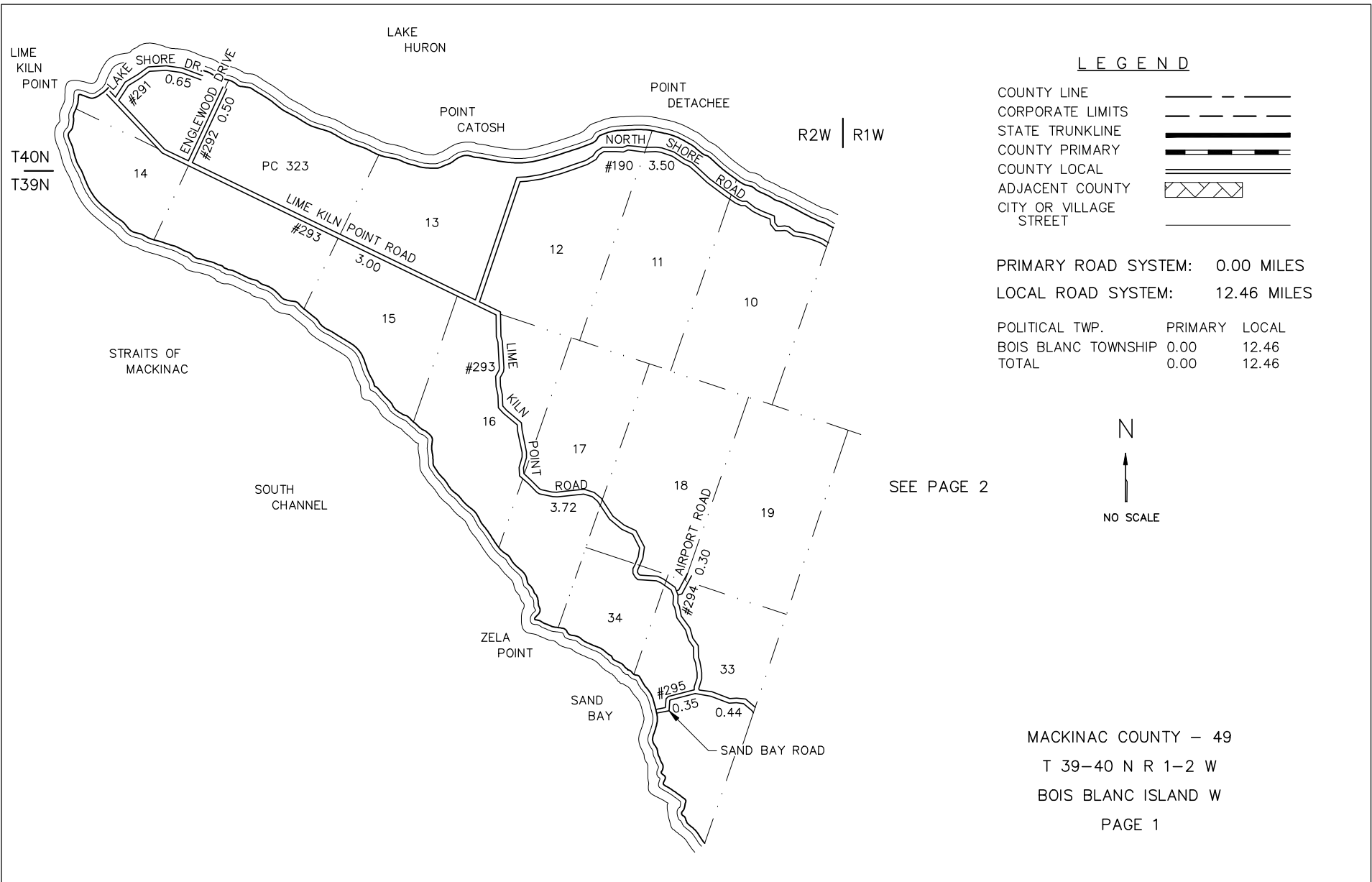
DATE

2.27.24



MACKINAC COUNTY ROAD COMMISSION  
CERTIFICATION MAPS  
PAGE INDEX – EAST





**LEGEND**

- COUNTY LINE
- CORPORATE LIMITS
- STATE TRUNKLINE
- COUNTY PRIMARY
- COUNTY LOCAL
- ADJACENT COUNTY
- CITY OR VILLAGE STREET

PRIMARY ROAD SYSTEM: 0.00 MILES  
 LOCAL ROAD SYSTEM: 12.46 MILES

POLITICAL TWP.	PRIMARY	LOCAL
BOIS BLANC TOWNSHIP	0.00	12.46
TOTAL	0.00	12.46

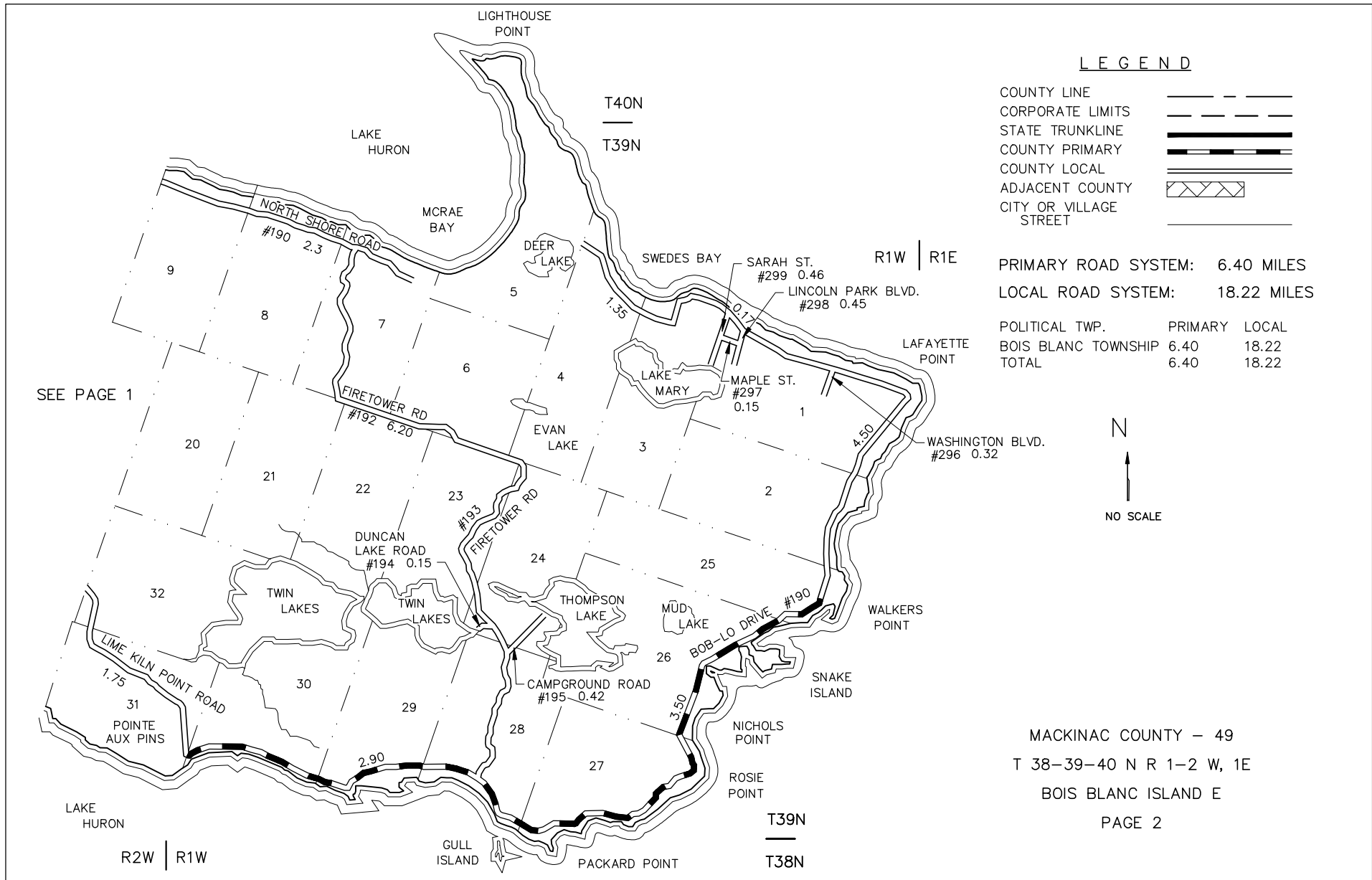
N



NO SCALE

SEE PAGE 2






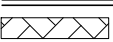

MACKINAC COUNTY – 49  
 T 39–40 N R 1–2 W  
 BOIS BLANC ISLAND W  
 PAGE 1



SEE PAGE 6

R4W | R3W

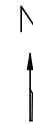
LEGEND

- COUNTY LINE 
- CORPORATE LIMITS 
- STATE TRUNKLINE 
- COUNTY PRIMARY 
- COUNTY LOCAL 
- ADJACENT COUNTY 
- CITY OR VILLAGE STREET 

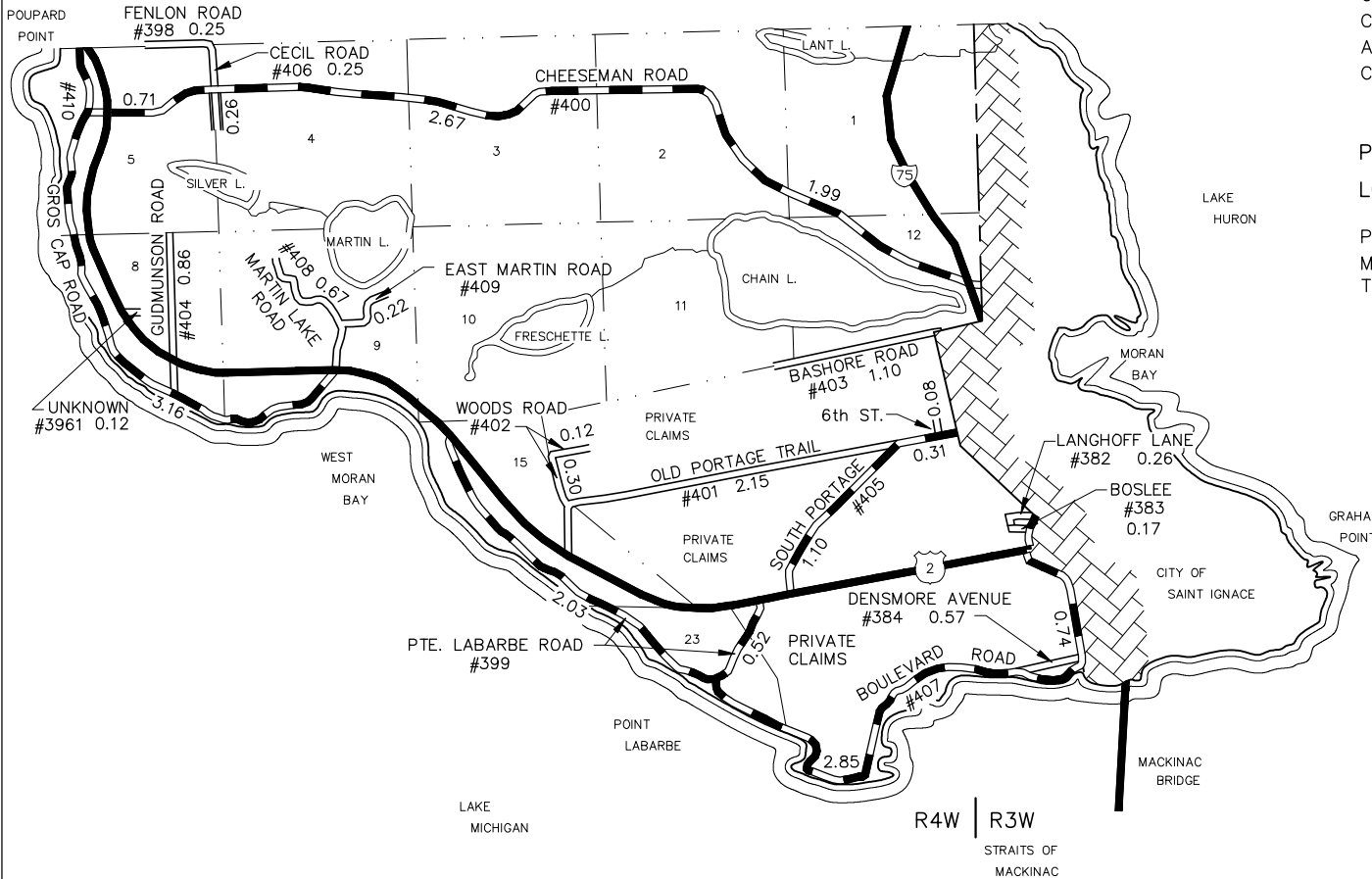
PRIMARY ROAD SYSTEM: 16.08 MILES

LOCAL ROAD SYSTEM: 7.38 MILES

POLITICAL TWP.	PRIMARY	LOCAL
MORAN TOWNSHIP	16.08	7.38
TOTAL	16.08	7.38



NO SCALE



R4W | R3W

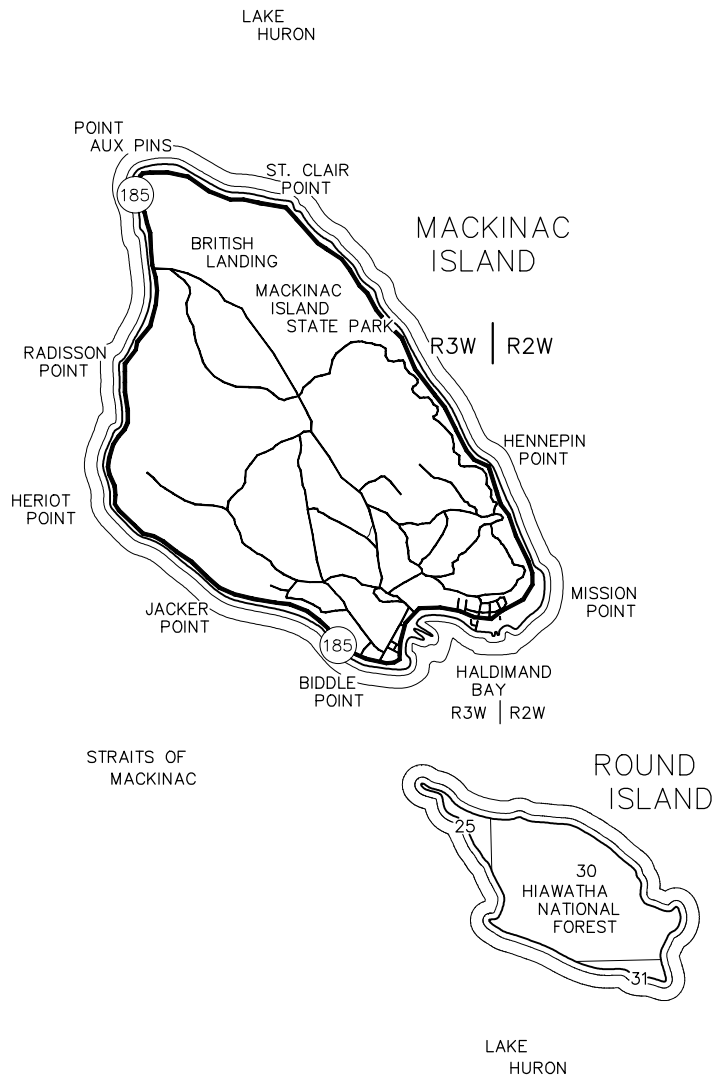
STRAITS OF MACKINAC

MACKINAC COUNTY - 49


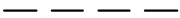



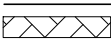

T 40 N R 3, 4W

MORAN TOWNSHIP

PAGE 3



**LEGEND**

- COUNTY LINE 
- CORPORATE LIMITS 
- STATE TRUNKLINE 
- COUNTY PRIMARY 
- COUNTY LOCAL 
- ADJACENT COUNTY 
- CITY OR VILLAGE STREET 

PRIMARY ROAD SYSTEM: 0.00 MILES

LOCAL ROAD SYSTEM: 0.00 MILES

POLITICAL TWP.	PRIMARY	LOCAL
BOIS BLANC TOWNSHIP	0.00	0.00
TOTAL	0.00	0.00

N



NO SCALE

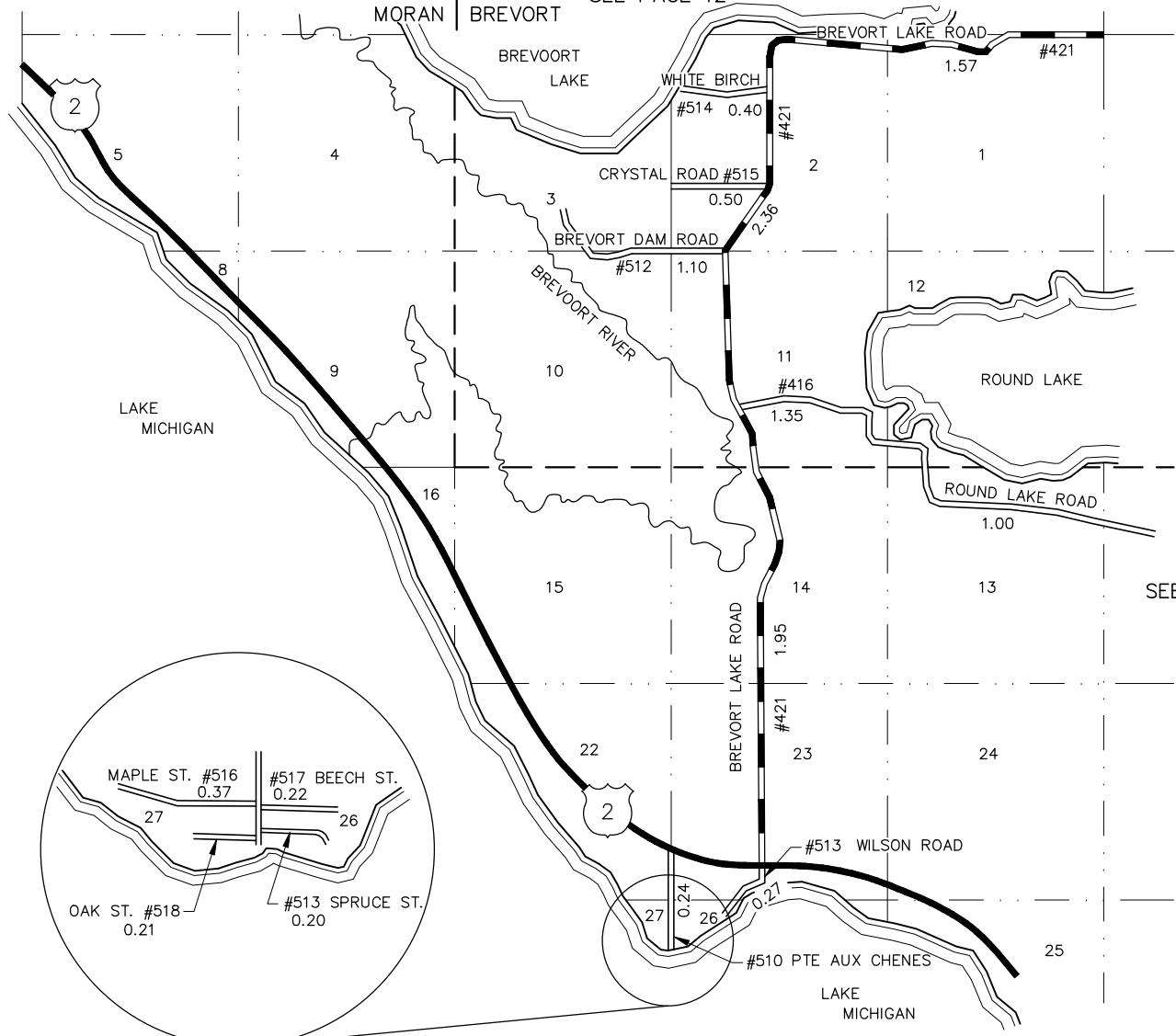
MACKINAC COUNTY – 49

T 40 N R 2–3W

MACKINAC ISLAND

PAGE 4

SEE PAGE 12



**LEGEND**

- COUNTY LINE
- CORPORATE LIMITS
- STATE TRUNKLINE
- COUNTY PRIMARY
- COUNTY LOCAL
- ADJACENT COUNTY
- CITY OR VILLAGE STREET

PRIMARY ROAD SYSTEM: 5.88 MILES  
 LOCAL ROAD SYSTEM: 5.86 MILES

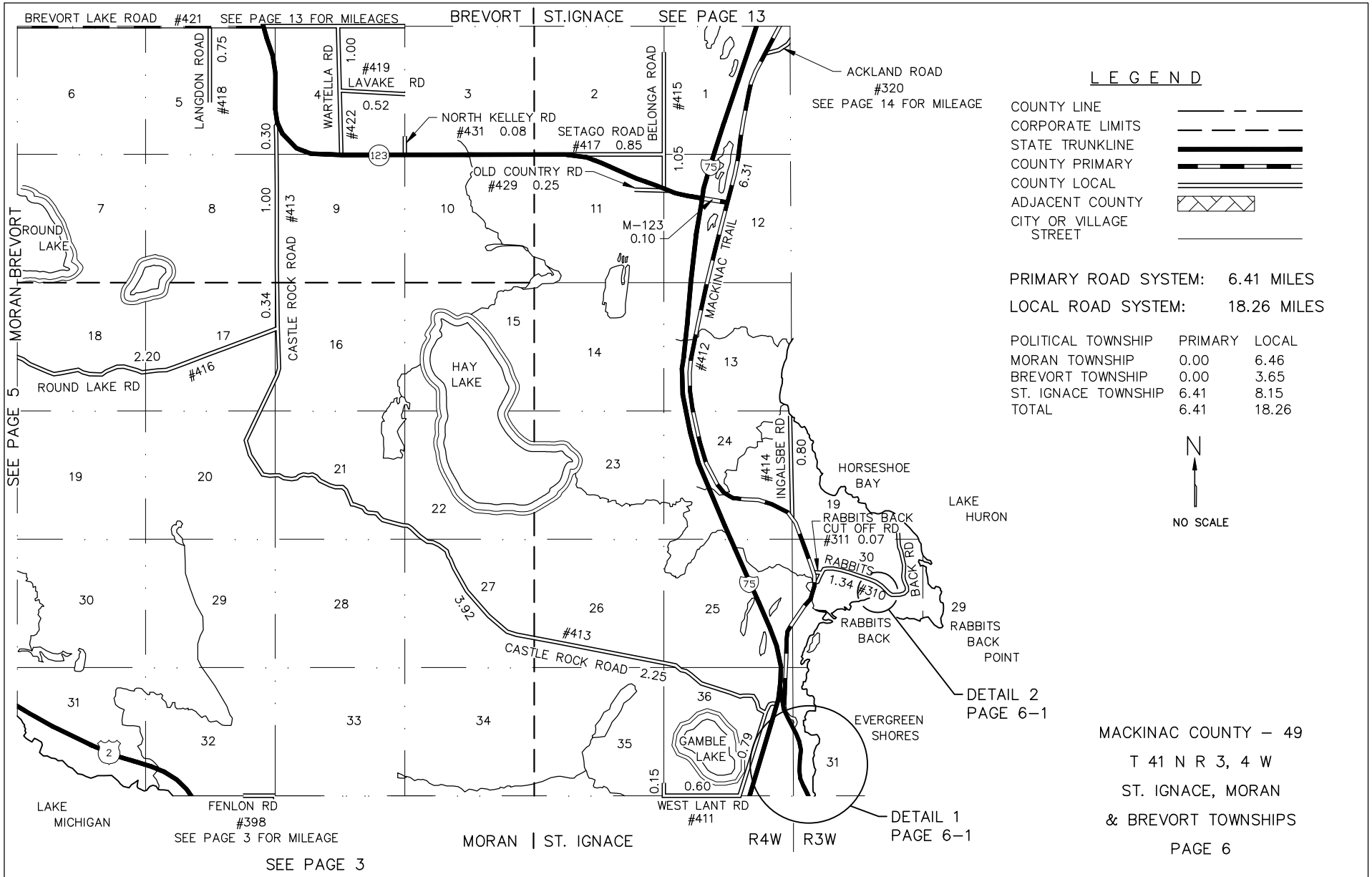
POLITICAL TWP.	PRIMARY	LOCAL
MORAN TOWNSHIP	1.95	2.51
BREVORT TOWNSHIP	3.93	3.35
TOTAL	5.88	5.86



SEE PAGE 6

MACKINAC COUNTY - 49  
 T 41 N R 5 W  
 MORAN & BREVORT TOWNSHIPS  
 PAGE 5





**LEGEND**

- COUNTY LINE
- CORPORATE LIMITS
- STATE TRUNKLINE
- COUNTY PRIMARY
- COUNTY LOCAL
- ADJACENT COUNTY
- CITY OR VILLAGE STREET

PRIMARY ROAD SYSTEM: 6.41 MILES  
 LOCAL ROAD SYSTEM: 18.26 MILES

POLITICAL TOWNSHIP	PRIMARY	LOCAL
MORAN TOWNSHIP	0.00	6.46
BREVORT TOWNSHIP	0.00	3.65
ST. IGNACE TOWNSHIP	6.41	8.15
<b>TOTAL</b>	<b>6.41</b>	<b>18.26</b>



MACKINAC COUNTY - 49  
 T 41 N R 3, 4 W  
 ST. IGNACE, MORAN  
 & BREVORT TOWNSHIPS  
 PAGE 6

BREVORT LAKE ROAD #421 SEE PAGE 13 FOR MILEAGES  
 BREVORT | ST.IGNACE SEE PAGE 13

ACKLAND ROAD #320  
 SEE PAGE 14 FOR MILEAGE

DETAIL 2  
 PAGE 6-1

DETAIL 1  
 PAGE 6-1

SEE PAGE 3 FOR MILEAGE

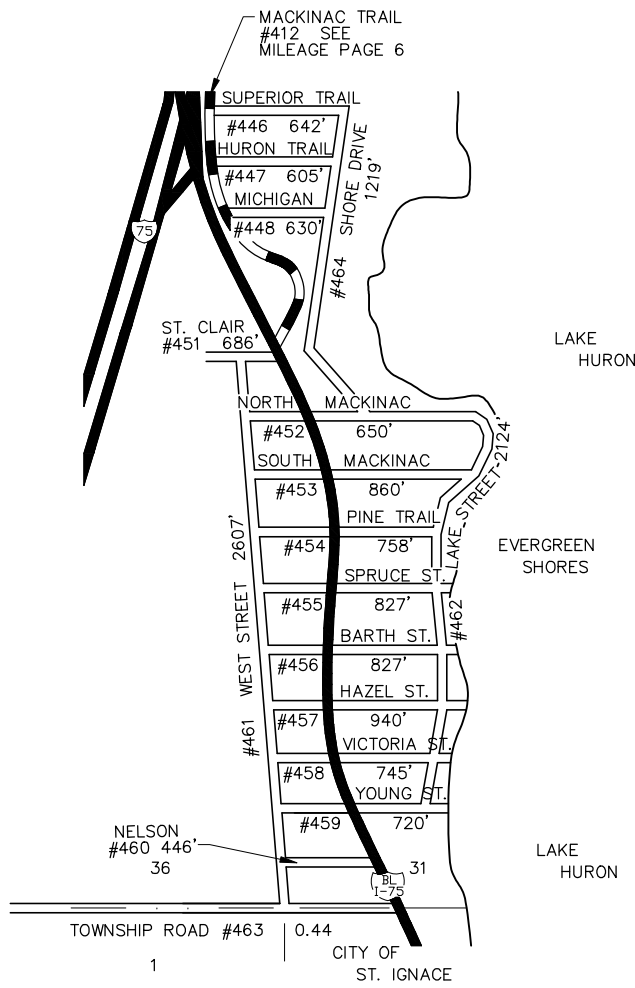
SEE PAGE 3

SEE PAGE 5

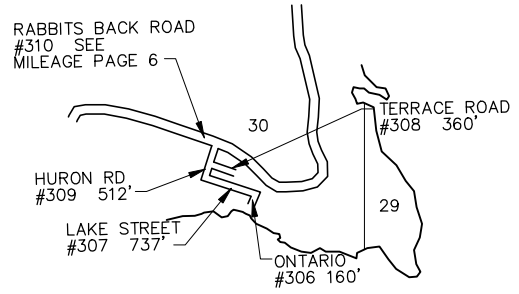
FENLON RD #398

MORAN | ST. IGNACE

R4W | R3W



DETAIL 1  
FROM PAGE 6



DETAIL 2  
FROM PAGE 6

**LEGEND**

- COUNTY LINE
- CORPORATE LIMITS
- STATE TRUNKLINE
- COUNTY PRIMARY
- COUNTY LOCAL
- ADJACENT COUNTY
- CITY OR VILLAGE STREET

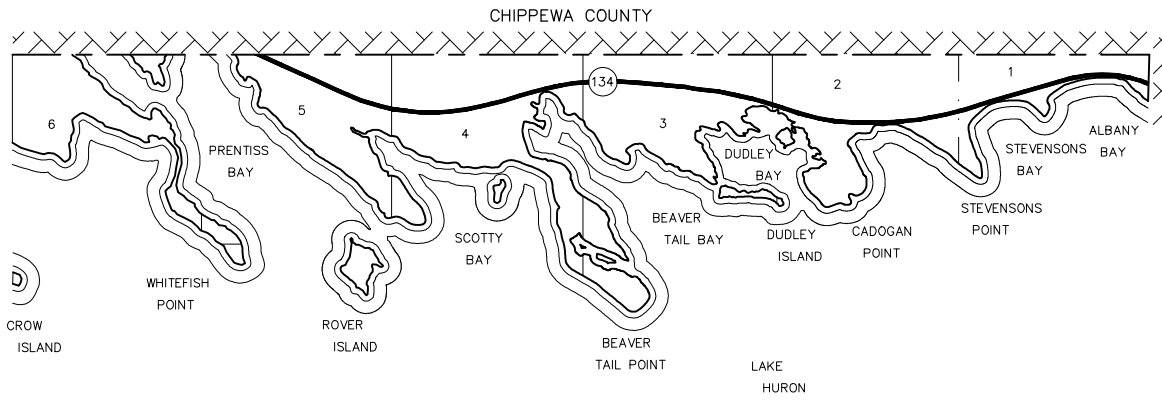
PRIMARY ROAD SYSTEM: 0.00 MILES  
 LOCAL ROAD SYSTEM: 3.67 MILES

POLITICAL TWP.	PRIMARY	LOCAL
ST. IGNACE TOWNSHIP	0.00	3.67
<b>TOTAL</b>	<b>0.00</b>	<b>3.67</b>



MACKINAC COUNTY - 49  
 T 41 N R 3 W  
 ST. IGNACE TOWNSHIP  
 PAGE 6 - 1

SEE PAGE 17



LEGEND

COUNTY LINE	— — — — —
CORPORATE LIMITS	- - - - -
STATE TRUNKLINE	—————
COUNTY PRIMARY	—————
COUNTY LOCAL	—————
ADJACENT COUNTY	▨ ▨ ▨ ▨
CITY OR VILLAGE STREET	—————

PRIMARY ROAD SYSTEM: 0.00 MILES

LOCAL ROAD SYSTEM: 0.00 MILES

POLITICAL TWP.	PRIMARY	LOCAL
CLARK TOWNSHIP	0.00	0.00
TOTAL	0.00	0.00



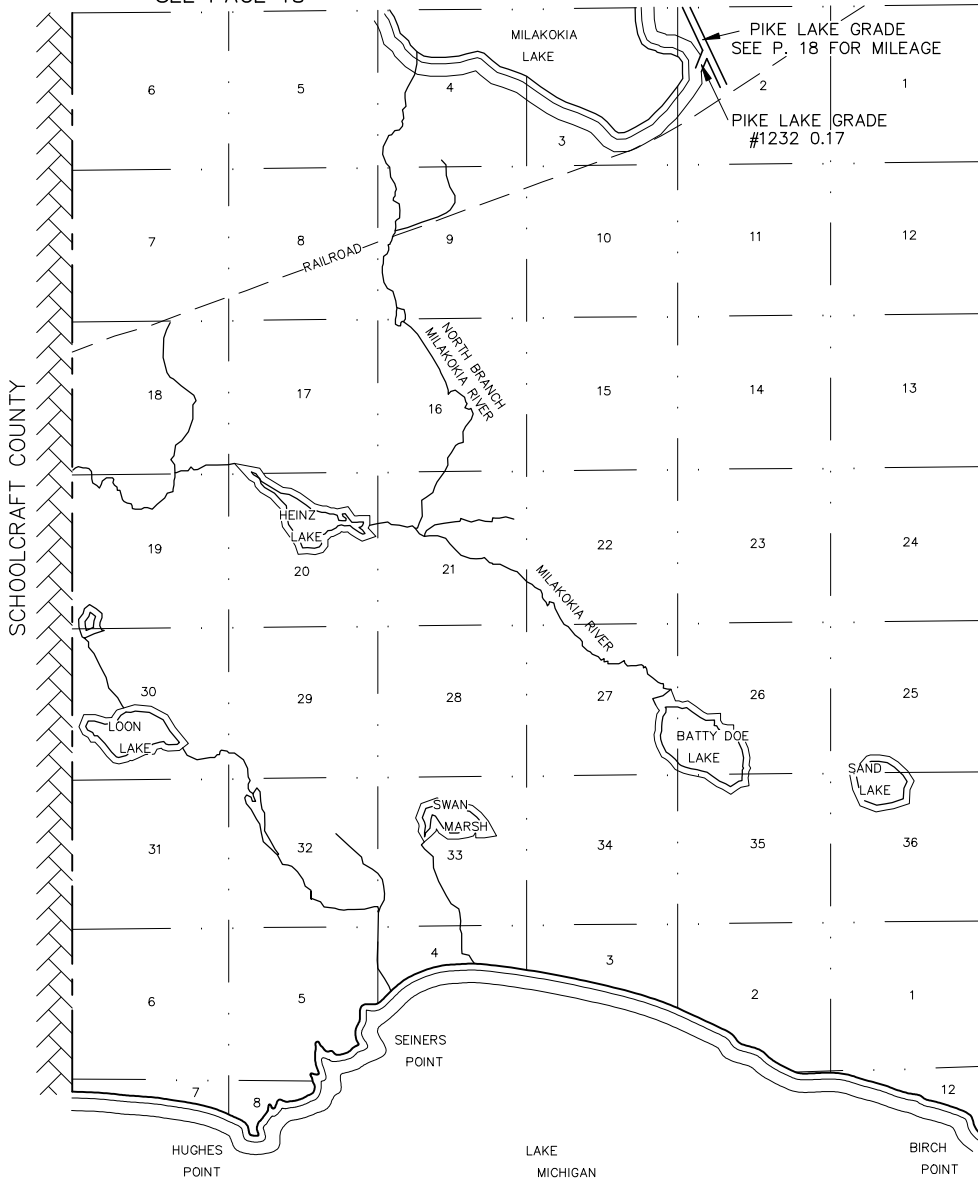
MACKINAC COUNTY — 49

T 41 N R 2 E

CLARK TOWNSHIP

PAGE 7

SEE PAGE 18



**LEGEND**

- COUNTY LINE
- CORPORATE LIMITS
- STATE TRUNKLINE
- COUNTY PRIMARY
- COUNTY LOCAL
- ADJACENT COUNTY
- CITY OR VILLAGE STREET

PRIMARY ROAD SYSTEM: 0.00 MILES

LOCAL ROAD SYSTEM: 0.17 MILES

POLITICAL TWP.	PRIMARY	LOCAL
NEWTON TOWNSHIP	0.00	0.17
TOTAL	0.00	0.17

SEE PAGE 9



NO SCALE

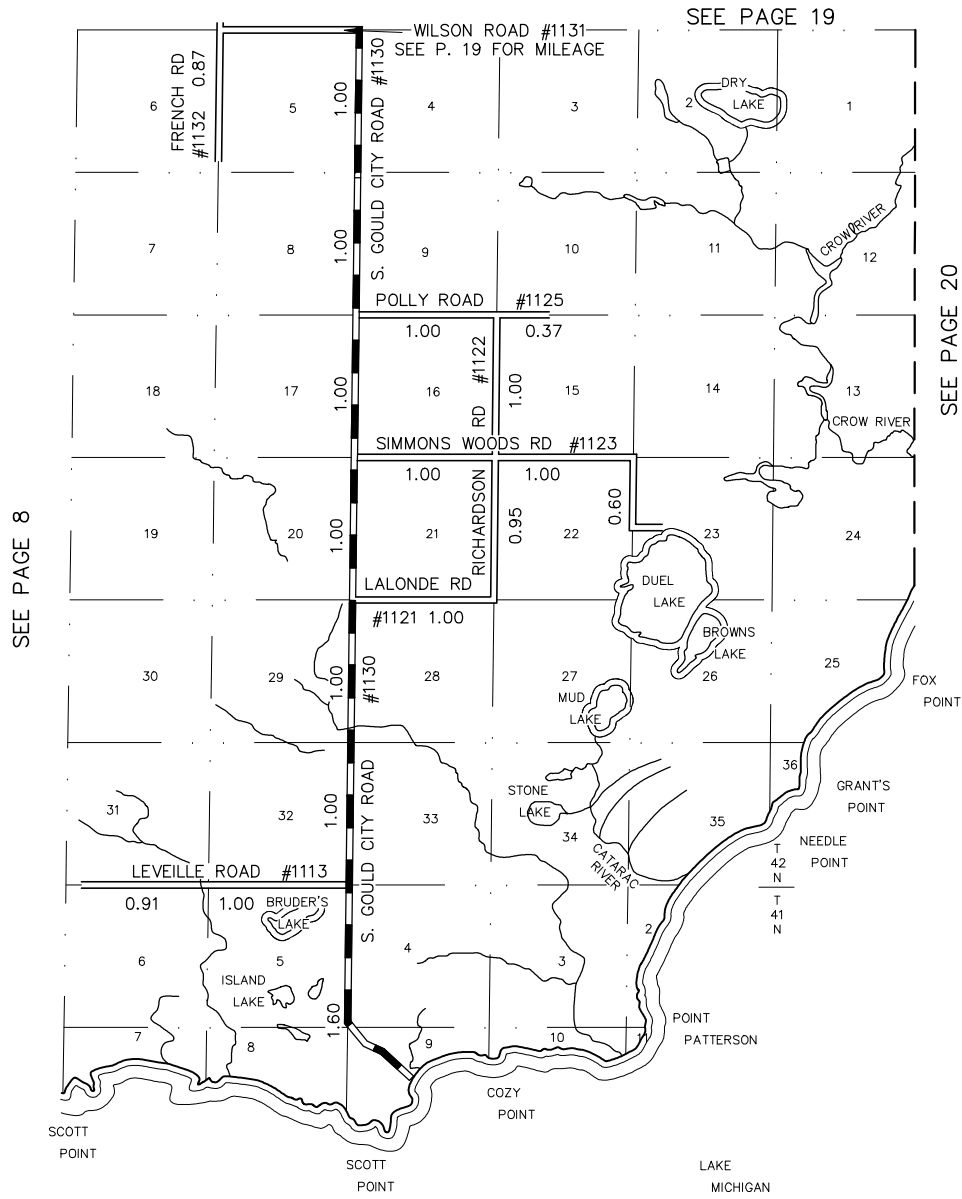
T  
42  
N  
T  
41  
N

MACKINAC COUNTY - 49

T 41 - 42 N R 12 W

NEWTON TOWNSHIP

PAGE 8



SEE PAGE 19

SEE PAGE 8

SEE PAGE 20

**LEGEND**

- COUNTY LINE
- CORPORATE LIMITS
- STATE TRUNKLINE
- COUNTY PRIMARY
- COUNTY LOCAL
- ADJACENT COUNTY
- CITY OR VILLAGE STREET

PRIMARY ROAD SYSTEM: 7.60 MILES  
 LOCAL ROAD SYSTEM: 9.70 MILES

POLITICAL TWP.	PRIMARY	LOCAL
NEWTON TOWNSHIP	7.60	9.70
TOTAL	7.60	9.70



MACKINAC COUNTY - 49  
 T 41 - 42 N R 11 W  
 NEWTON TOWNSHIP  
 PAGE 9

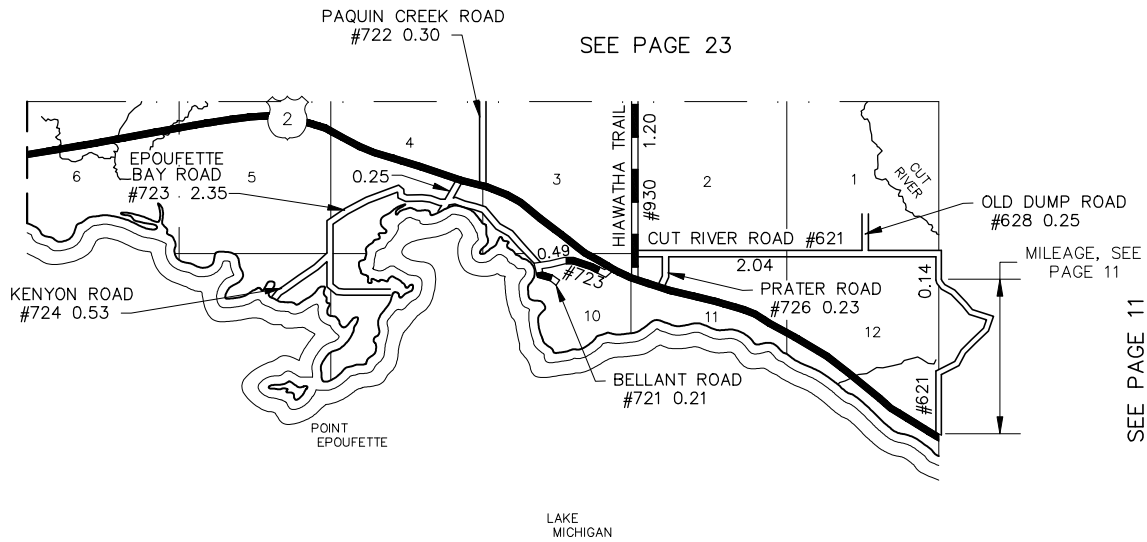
LEGEND

COUNTY LINE	— — — — —
CORPORATE LIMITS	- - - - -
STATE TRUNKLINE	—————
COUNTY PRIMARY	— — — — —
COUNTY LOCAL	—————
ADJACENT COUNTY	▨ ▨ ▨ ▨
CITY OR VILLAGE STREET	—————

PRIMARY ROAD SYSTEM: 1.90

LOCAL ROAD SYSTEM: 6.09

POLITICAL TWP.	PRIMARY	LOCAL
HENDRICKS TOWNSHIP	1.90	6.09
TOTAL	1.90	6.09

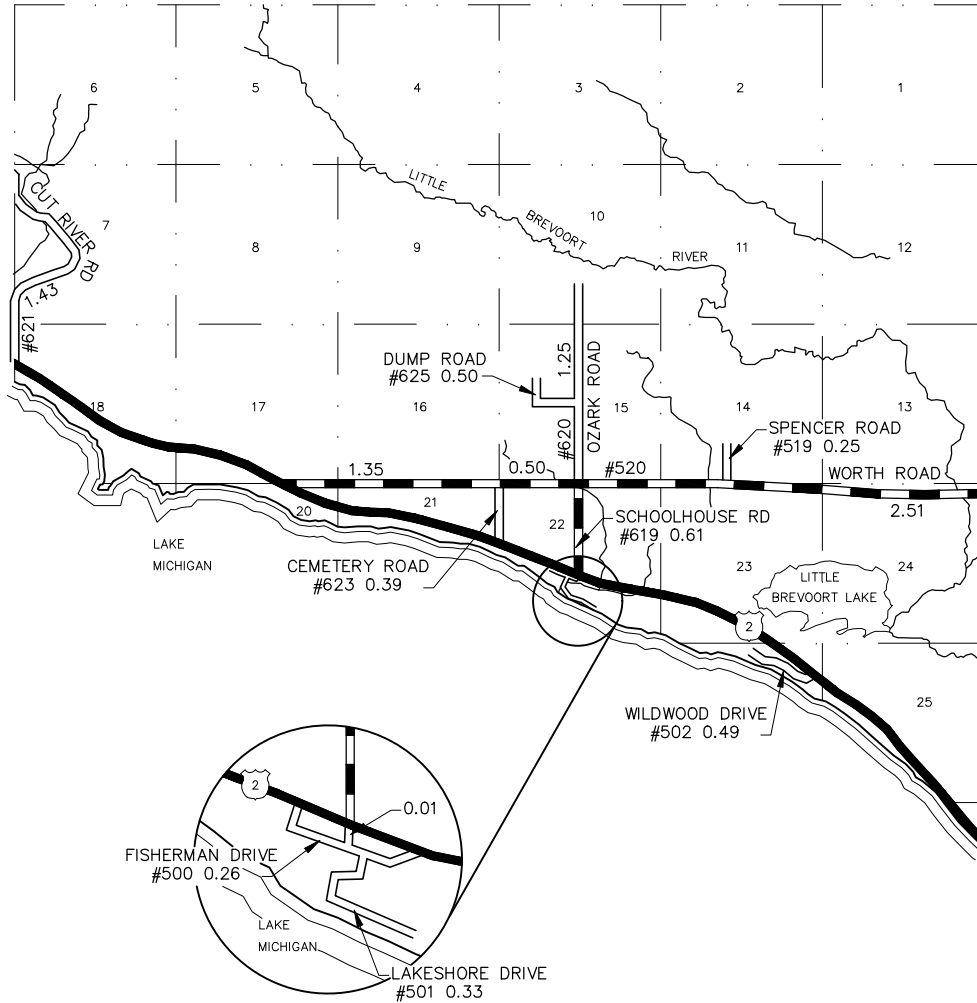


MACKINAC COUNTY — 49  
 T 42 N — R 7 W  
 HENDRICKS TOWNSHIP  
 PAGE 10

SEE PAGE 24

SEE PAGE 10

SEE PAGE 12



**LEGEND**

- COUNTY LINE
- CORPORATE LIMITS
- STATE TRUNKLINE
- COUNTY PRIMARY
- COUNTY LOCAL
- ADJACENT COUNTY
- CITY OR VILLAGE STREET

PRIMARY ROAD SYSTEM: 4.97

LOCAL ROAD SYSTEM: 4.91

POLITICAL TWP.	PRIMARY	LOCAL
MORAN TOWNSHIP	4.97	4.91
TOTAL	4.97	4.91



MACKINAC COUNTY - 49

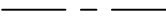






T 42 N R 6 W

MORAN TOWNSHIP

PAGE 11

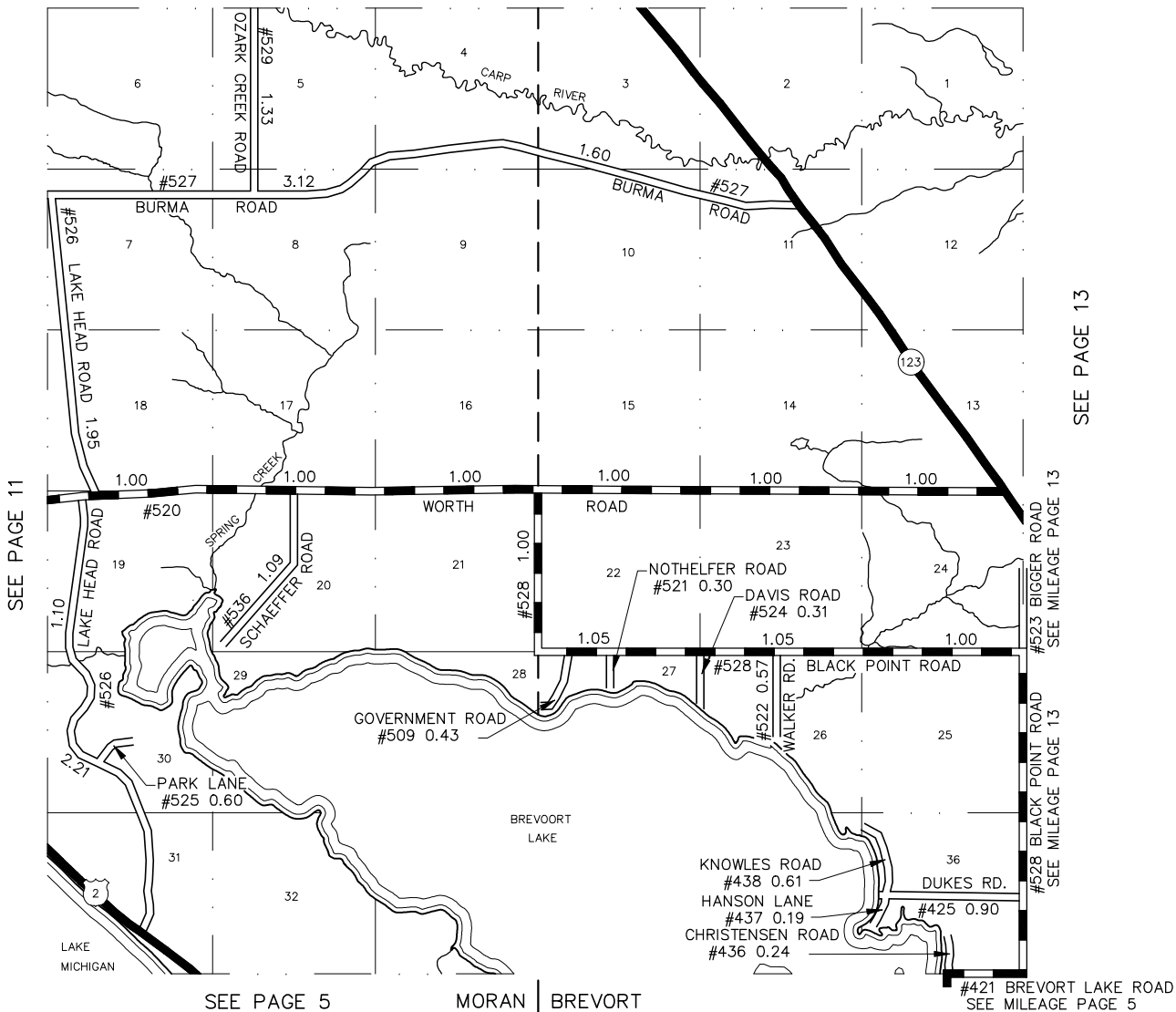
MORAN | BREVORT SEE PAGE 25

**LEGEND**

- COUNTY LINE 
- CORPORATE LIMITS 
- STATE TRUNKLINE 
- COUNTY PRIMARY 
- COUNTY LOCAL 
- ADJACENT COUNTY 
- CITY OR VILLAGE STREET 

PRIMARY ROAD SYSTEM: 10.10 MILES  
 LOCAL ROAD SYSTEM: 16.55 MILES

POLITICAL TWP.	PRIMARY	LOCAL
BREVORT TOWNSHIP	7.10	5.15
MORAN TOWNSHIP	3.00	11.40
<b>TOTAL</b>	<b>10.10</b>	<b>16.55</b>



SEE PAGE 13

SEE PAGE 11

SEE MILEAGE PAGE 13

SEE MILEAGE PAGE 13

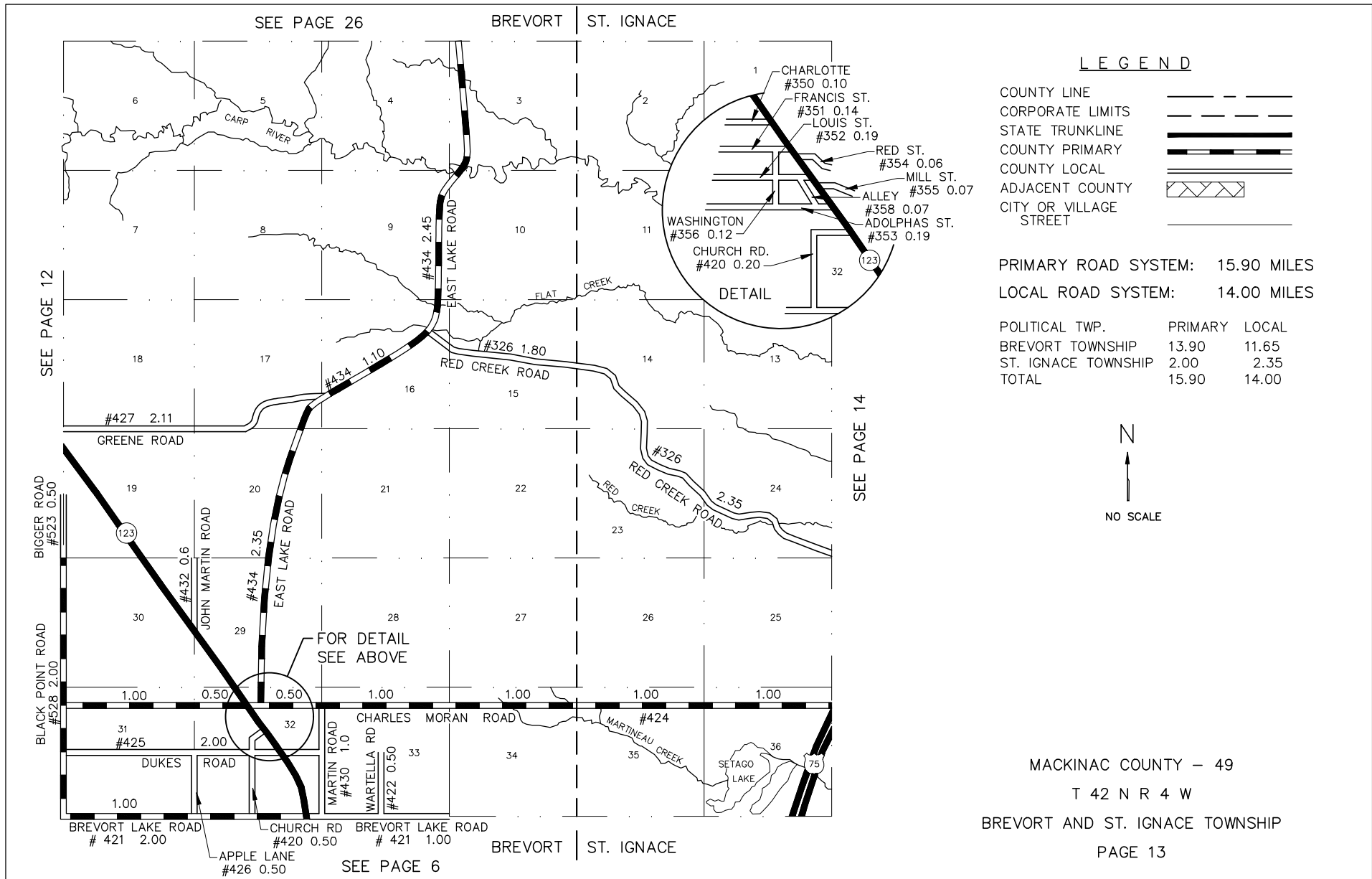
SEE PAGE 5

MORAN | BREVORT

#421 BREVORT LAKE ROAD  
SEE MILEAGE PAGE 5

MACKINAC COUNTY - 49  
 T 42 N R 5 W  
 MORAN AND BREVORT TOWNSHIPS  
 PAGE 12





SEE PAGE 26

BREVORT | ST. IGNACE

SEE PAGE 12

SEE PAGE 14

FOR DETAIL  
 SEE ABOVE

SEE PAGE 6

LEGEND

- COUNTY LINE
- CORPORATE LIMITS
- STATE TRUNKLINE
- COUNTY PRIMARY
- COUNTY LOCAL
- ADJACENT COUNTY
- CITY OR VILLAGE
- STREET

PRIMARY ROAD SYSTEM: 15.90 MILES  
 LOCAL ROAD SYSTEM: 14.00 MILES

POLITICAL TWP.	PRIMARY	LOCAL
BREVORT TOWNSHIP	13.90	11.65
ST. IGNACE TOWNSHIP	2.00	2.35
TOTAL	15.90	14.00

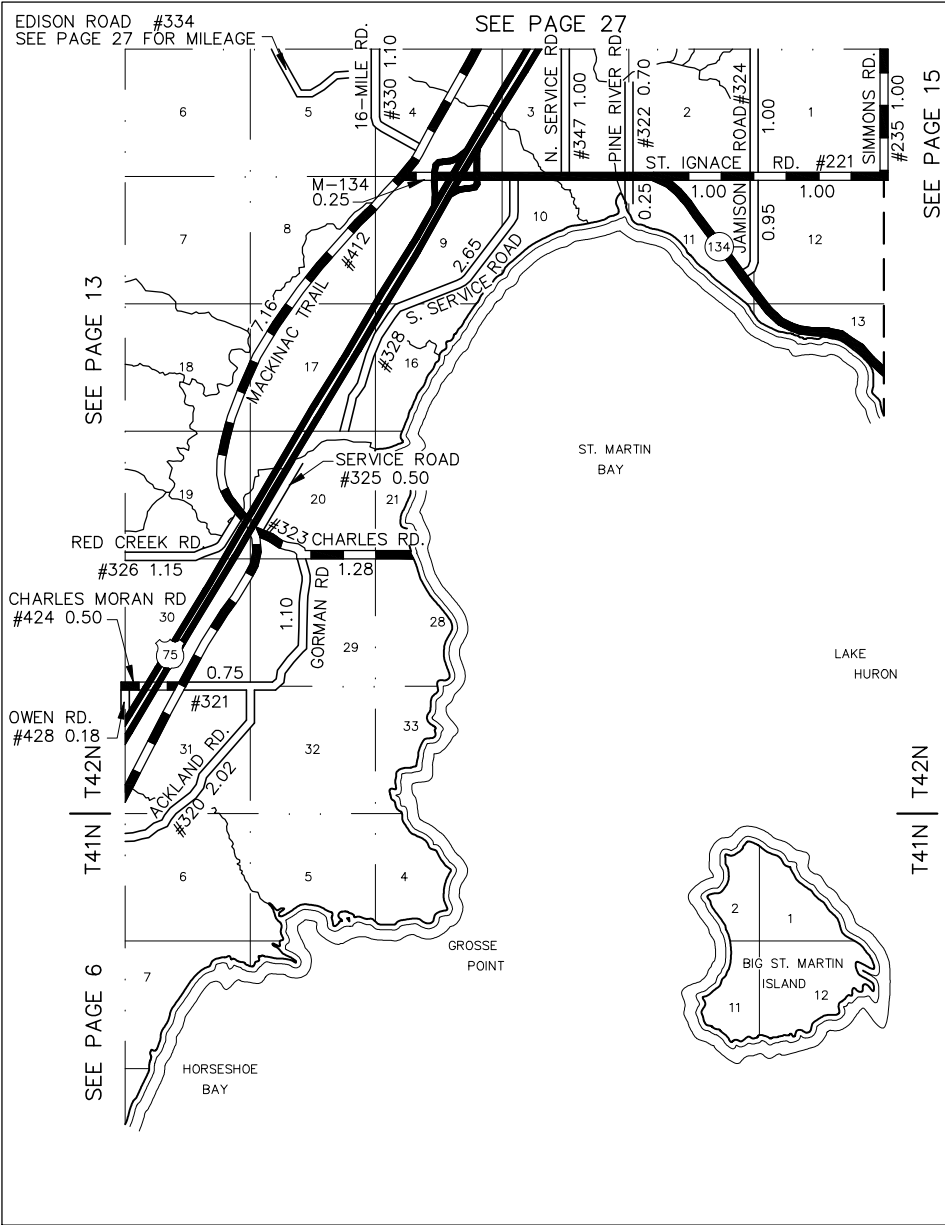


MACKINAC COUNTY - 49

T 42 N R 4 W

BREVORT AND ST. IGNACE TOWNSHIP

PAGE 13



**LEGEND**

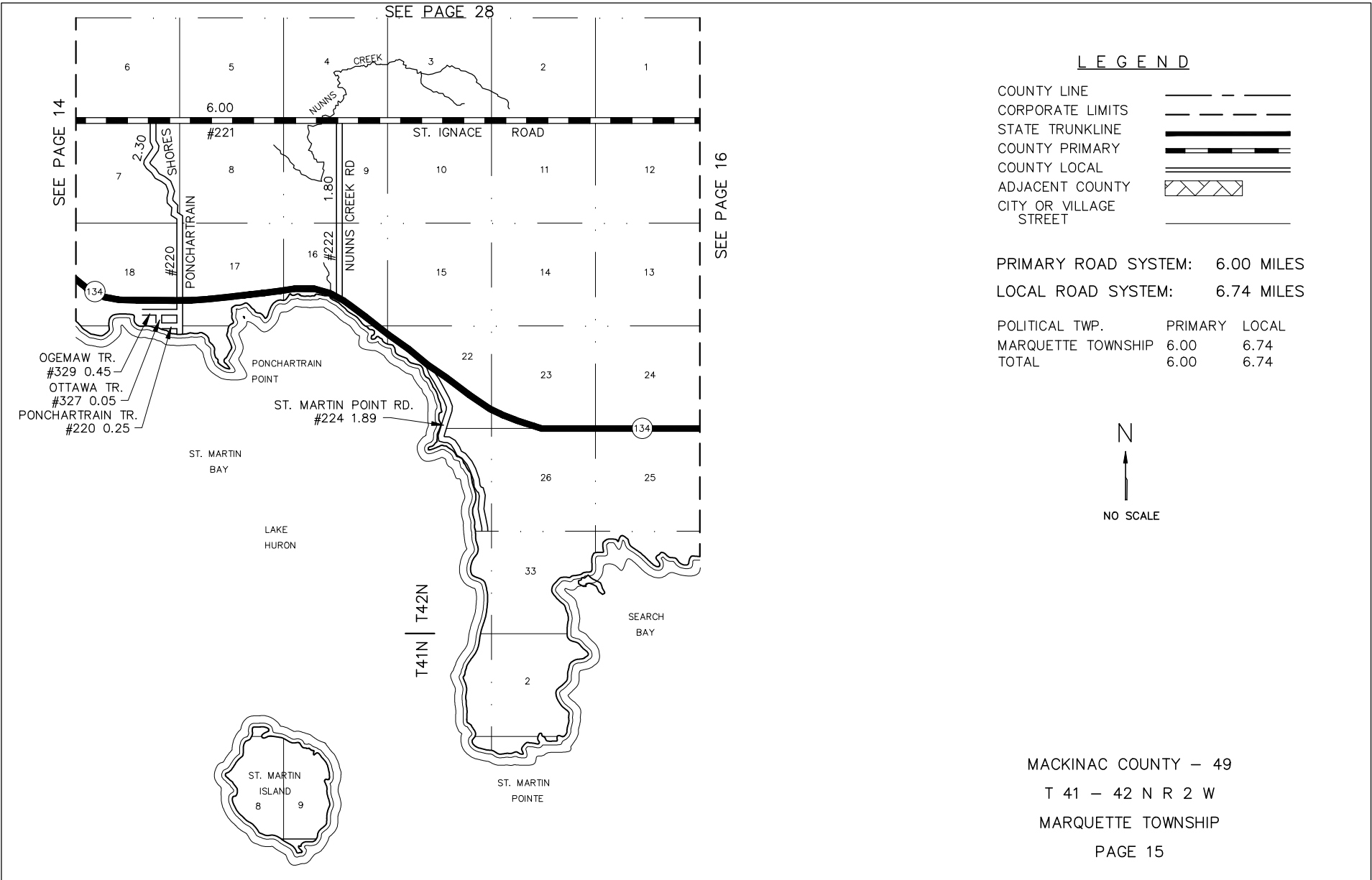
- COUNTY LINE
- CORPORATE LIMITS
- STATE TRUNKLINE
- COUNTY PRIMARY
- COUNTY LOCAL
- ADJACENT COUNTY
- CITY OR VILLAGE STREET

PRIMARY ROAD SYSTEM: 12.19 MILES  
 LOCAL ROAD SYSTEM: 13.35 MILES

POLITICAL TWP.	PRIMARY	LOCAL
ST. IGNACE TOWNSHIP	12.19	13.35
TOTAL	12.19	13.35



MACKINAC COUNTY - 49  
 T 41 - 42 N R 3 W  
 ST. IGNACE TOWNSHIP  
 PAGE 14



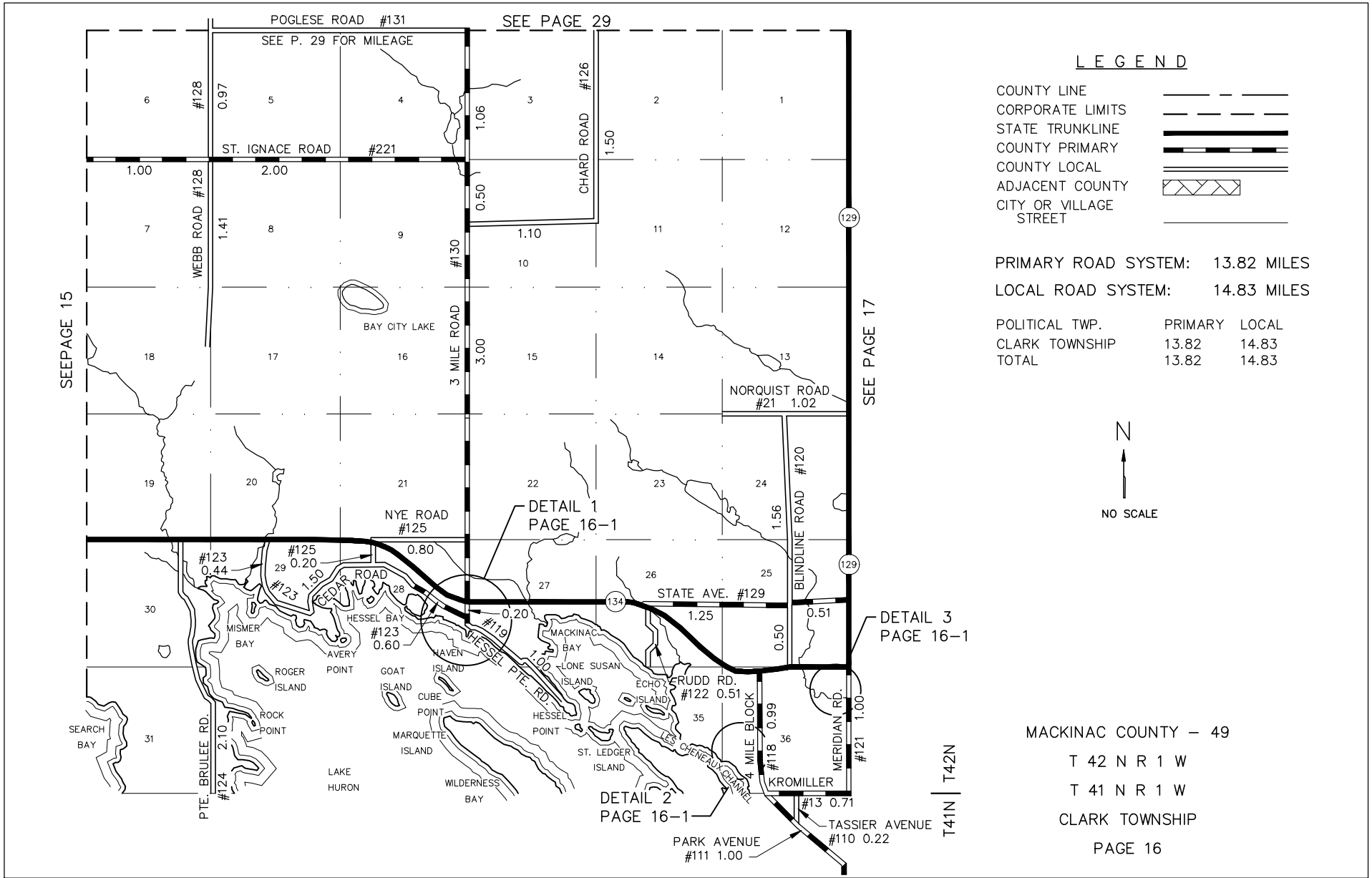
LEGEND

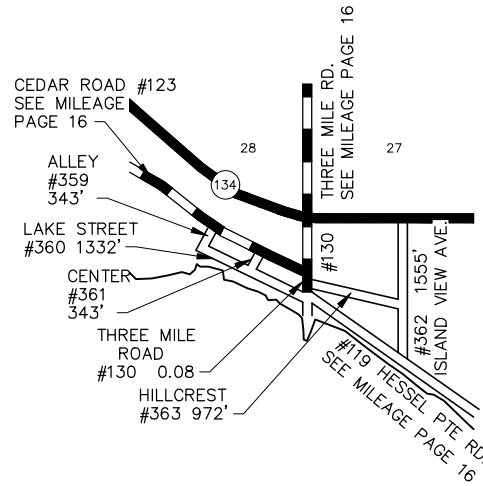
- COUNTY LINE ---
- CORPORATE LIMITS ---
- STATE TRUNKLINE =====
- COUNTY PRIMARY -----
- COUNTY LOCAL =====
- ADJACENT COUNTY [X/X/X/X]
- CITY OR VILLAGE STREET ---

PRIMARY ROAD SYSTEM: 6.00 MILES  
 LOCAL ROAD SYSTEM: 6.74 MILES

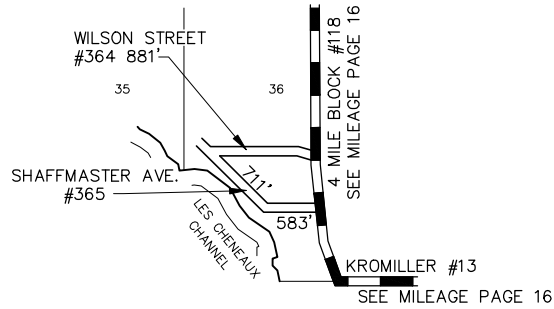
POLITICAL TWP.	PRIMARY	LOCAL
MARQUETTE TOWNSHIP	6.00	6.74
TOTAL	6.00	6.74



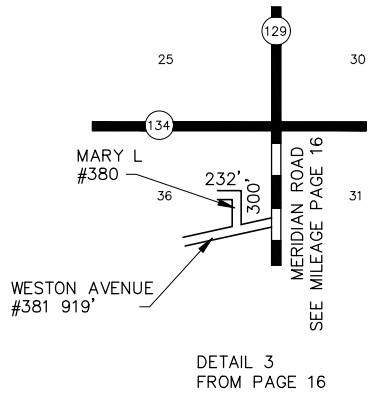




DETAIL 1  
FROM PAGE 16



DETAIL 2  
FROM PAGE 16



DETAIL 3  
FROM PAGE 16

**LEGEND**

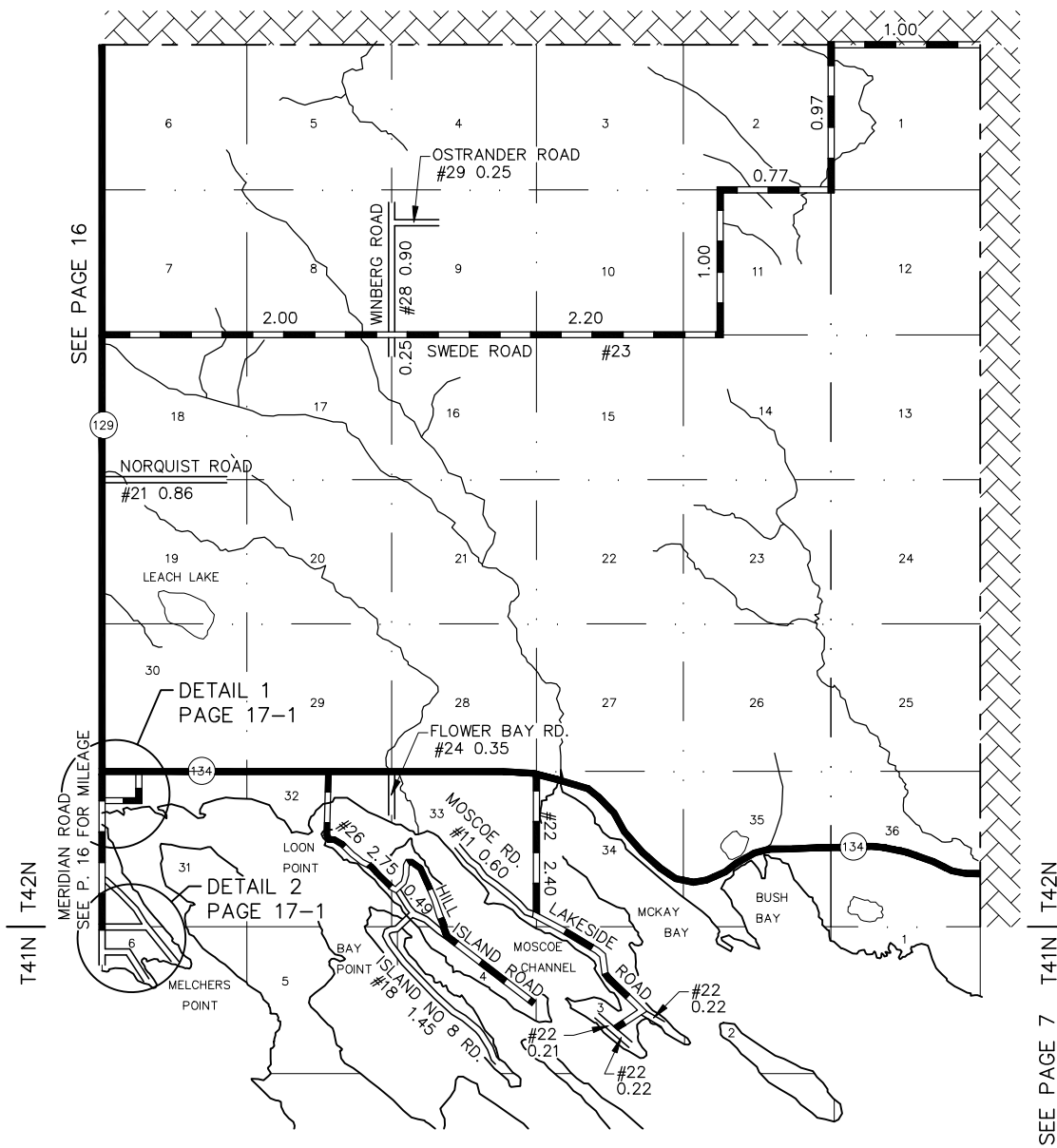
- COUNTY LINE
- CORPORATE LIMITS
- STATE TRUNKLINE
- COUNTY PRIMARY
- COUNTY LOCAL
- ADJACENT COUNTY
- CITY OR VILLAGE STREET

PRIMARY ROAD SYSTEM:	0.08 MILES	
LOCAL ROAD SYSTEM:	1.54 MILES	
POLITICAL TWP.	PRIMARY	LOCAL
CLARK TOWNSHIP	0.08	1.54
TOTAL	0.08	1.54



NO SCALE

MACKINAC COUNTY - 49  
T 42 N R 1 W  
CLARK TOWNSHIP  
PAGE 16 - 1



**LEGEND**

- COUNTY LINE
- CORPORATE LIMITS
- STATE TRUNKLINE
- COUNTY PRIMARY
- COUNTY LOCAL
- ADJACENT COUNTY
- CITY OR VILLAGE STREET

PRIMARY ROAD SYSTEM: 13.09 MILES

LOCAL ROAD SYSTEM: 5.80 MILES

POLITICAL TWP.	PRIMARY	LOCAL
CLARK TOWNSHIP	13.09	5.80
TOTAL	13.09	5.80



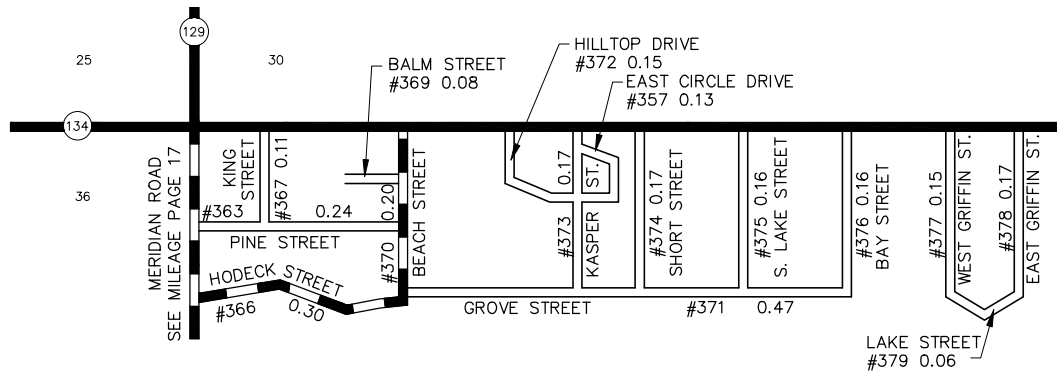
MACKINAC COUNTY - 49

T 42 N R 1 E

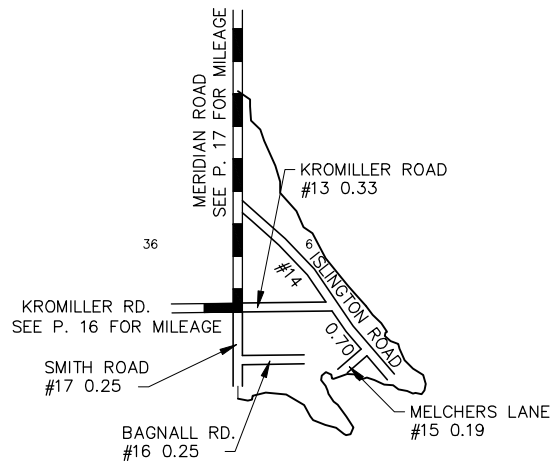
T 41 N R 1 E

CLARK TOWNSHIP

PAGE 17



DETAIL 1  
FROM PAGE 17



DETAIL 2  
FROM PAGE 17

**LEGEND**

- COUNTY LINE
- CORPORATE LIMITS
- STATE TRUNKLINE
- COUNTY PRIMARY
- COUNTY LOCAL
- ADJACENT COUNTY
- CITY OR VILLAGE STREET

PRIMARY ROAD SYSTEM: 0.50 MILES

LOCAL ROAD SYSTEM: 3.94 MILES

POLITICAL TWP.	PRIMARY	LOCAL
CLARK TOWNSHIP	0.50	3.94
TOTAL	0.50	3.94



NO SCALE

MACKINAC COUNTY - 49

T 42 N R 1 E

T 41 N R 1 E

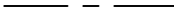






CLARK TOWNSHIP

PAGE 17 - 1

SEE PAGE 30

#1241 0.75

**LEGEND**

- COUNTY LINE 
- CORPORATE LIMITS 
- STATE TRUNKLINE 
- COUNTY PRIMARY 
- COUNTY LOCAL 
- ADJACENT COUNTY 
- CITY OR VILLAGE STREET 

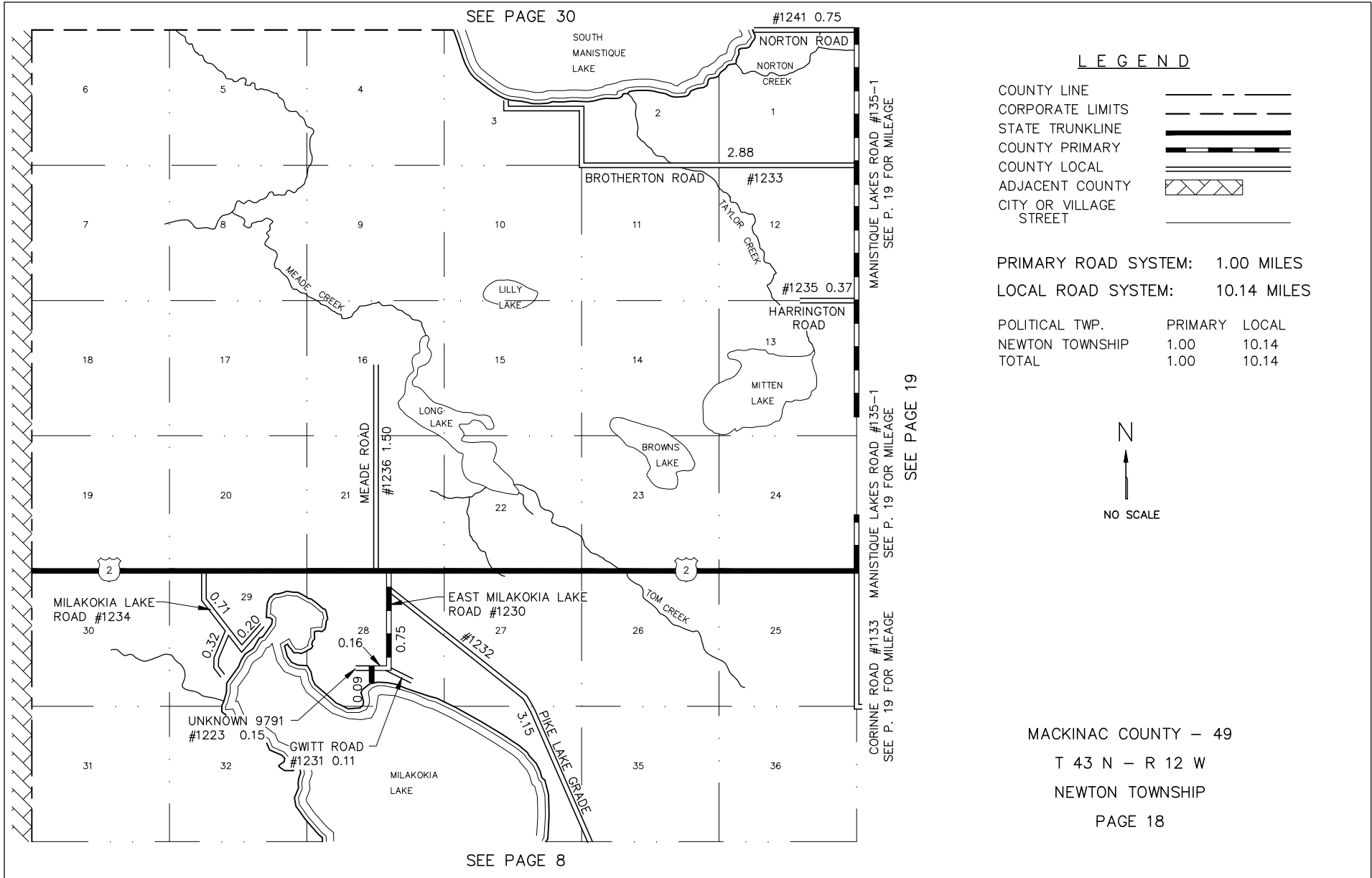
PRIMARY ROAD SYSTEM: 1.00 MILES  
 LOCAL ROAD SYSTEM: 10.14 MILES

POLITICAL TWP.	PRIMARY	LOCAL
NEWTON TOWNSHIP	1.00	10.14
TOTAL	1.00	10.14



MACKINAC COUNTY - 49  
 T 43 N - R 12 W  
 NEWTON TOWNSHIP  
 PAGE 18

SEE PAGE 8



SEE P. 19 FOR MILEAGE

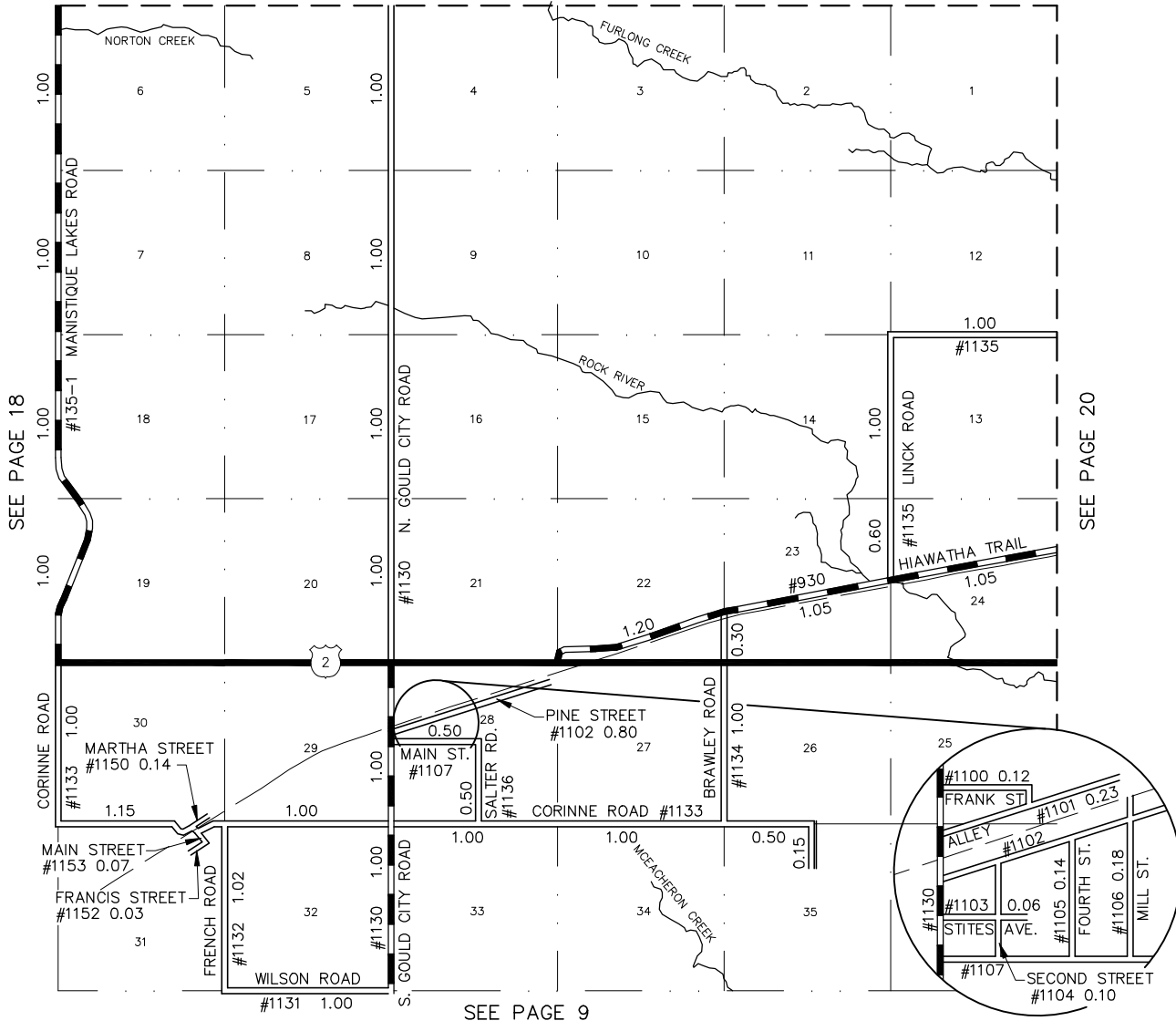
SEE P. 19 FOR MILEAGE

SEE P. 19 FOR MILEAGE

SEE PAGE 19



SEE PAGE 31



**LEGEND**

- COUNTY LINE
- CORPORATE LIMITS
- STATE TRUNKLINE
- COUNTY PRIMARY
- COUNTY LOCAL
- ADJACENT COUNTY
- CITY OR VILLAGE STREET

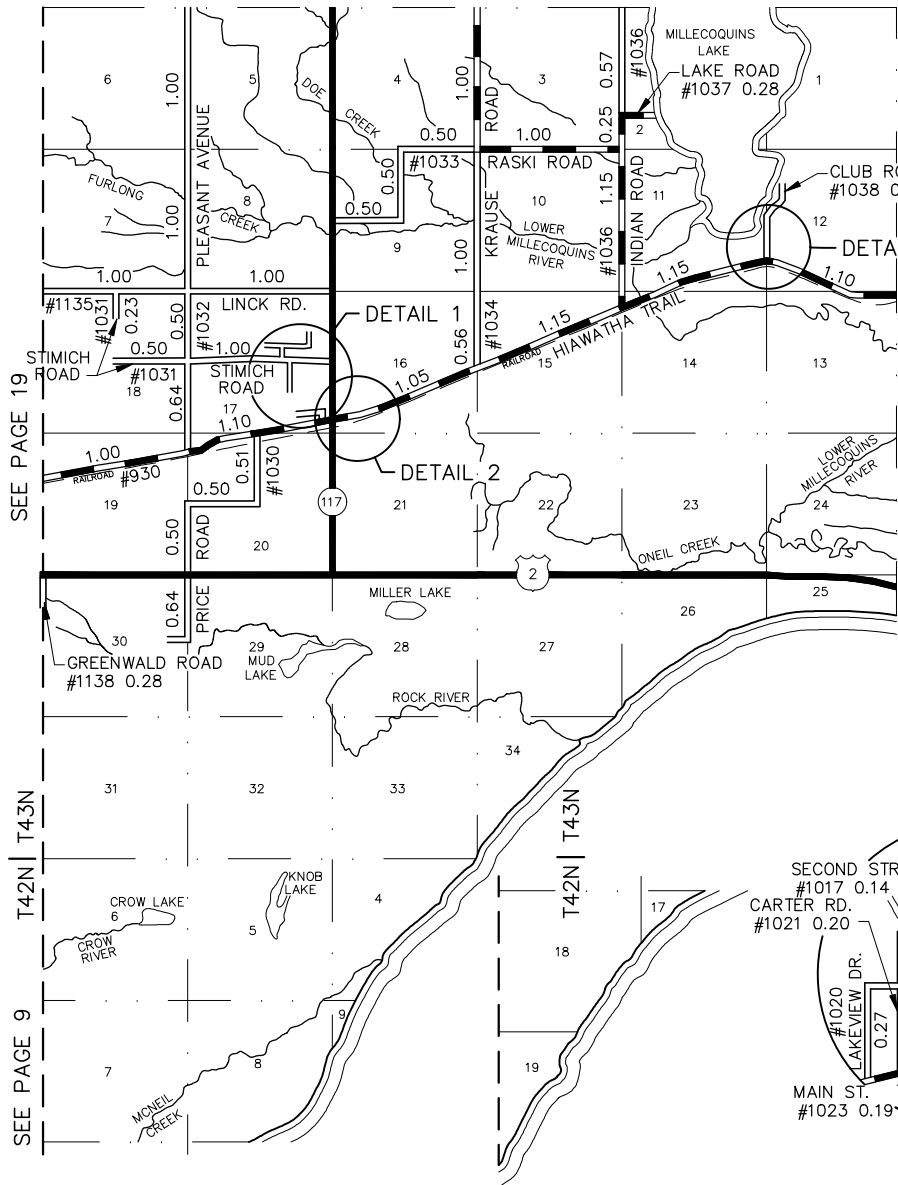
PRIMARY ROAD SYSTEM: 9.30 MILES  
 LOCAL ROAD SYSTEM: 18.59 MILES

POLITICAL TWP.	PRIMARY	LOCAL
NEWTON TOWNSHIP	9.30	18.59
TOTAL	9.30	18.59

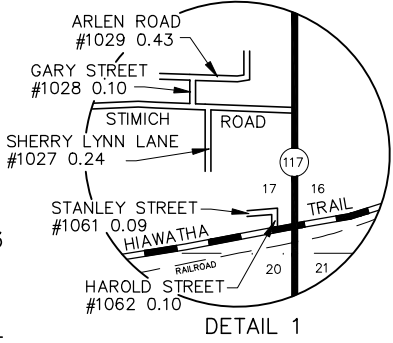


MACKINAC COUNTY - 49  
 T 43 N - R 11 W  
 NEWTON TOWNSHIP  
 PAGE 19

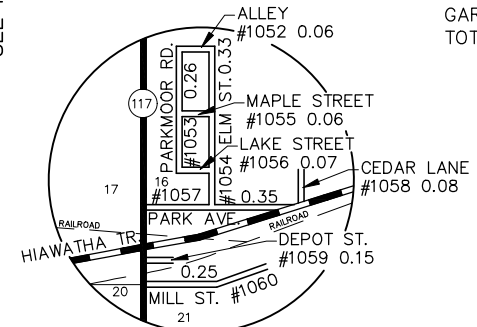
SEE PAGE 32



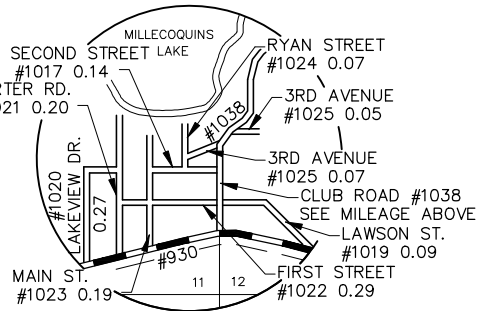
SEE PAGE 21



DETAIL 1



DETAIL 2



DETAIL 3

**LEGEND**

- COUNTY LINE
- CORPORATE LIMITS
- STATE TRUNKLINE
- COUNTY PRIMARY
- COUNTY LOCAL
- ADJACENT COUNTY
- CITY OR VILLAGE STREET

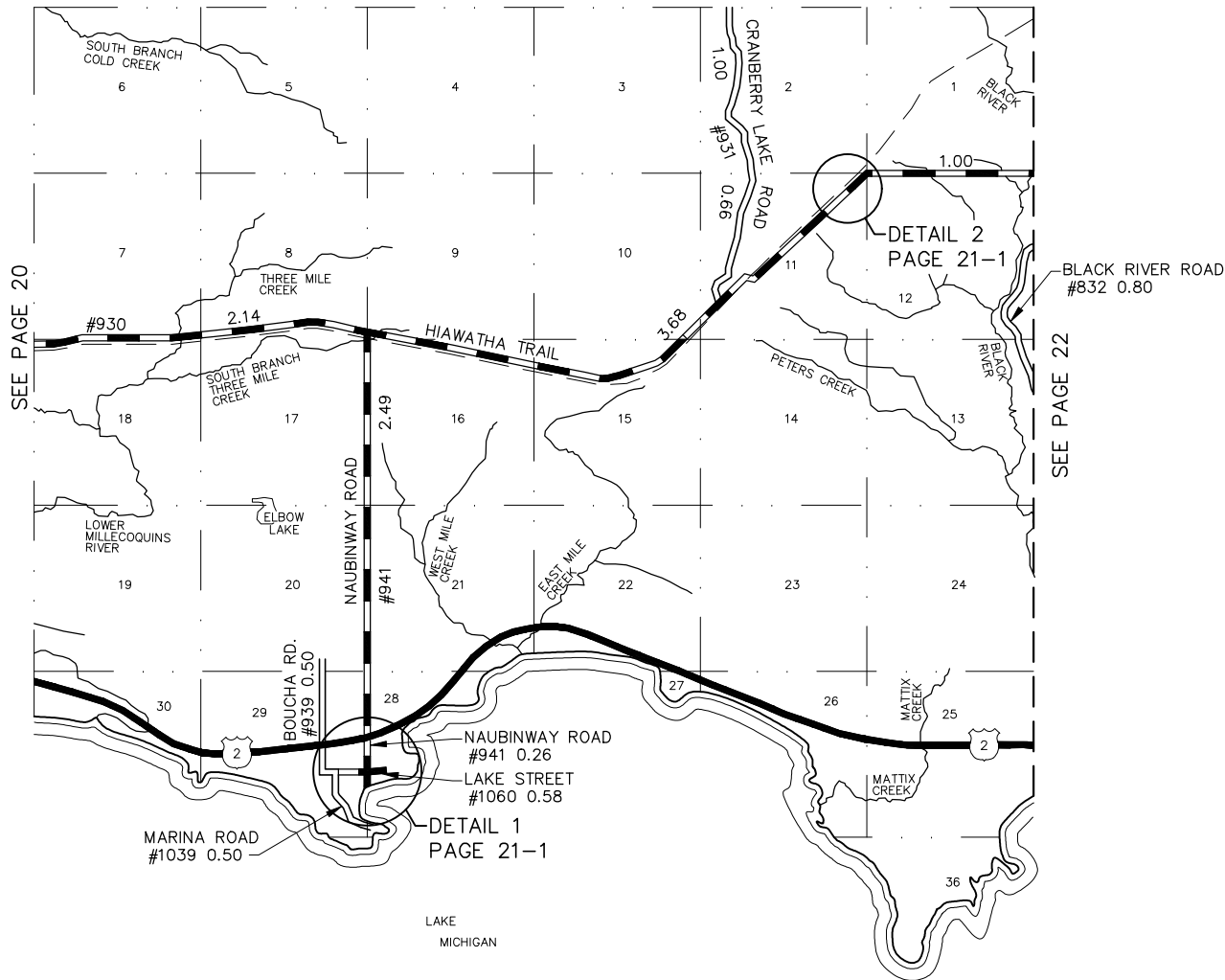
PRIMARY ROAD SYSTEM: 10.23  
 LOCAL ROAD SYSTEM: 17.47

POLITICAL TWP.	PRIMARY	LOCAL
GARFIELD TOWNSHIP	10.23	17.47
TOTAL	10.23	17.47



MACKINAC COUNTY - 49  
 T 42, 43 N - R 10 W  
 GARFIELD TOWNSHIP  
 PAGE 20

SEE PAGE 33

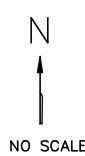


**LEGEND**

- COUNTY LINE
- CORPORATE LIMITS
- STATE TRUNKLINE
- COUNTY PRIMARY
- COUNTY LOCAL
- ADJACENT COUNTY
- CITY OR VILLAGE
- STREET

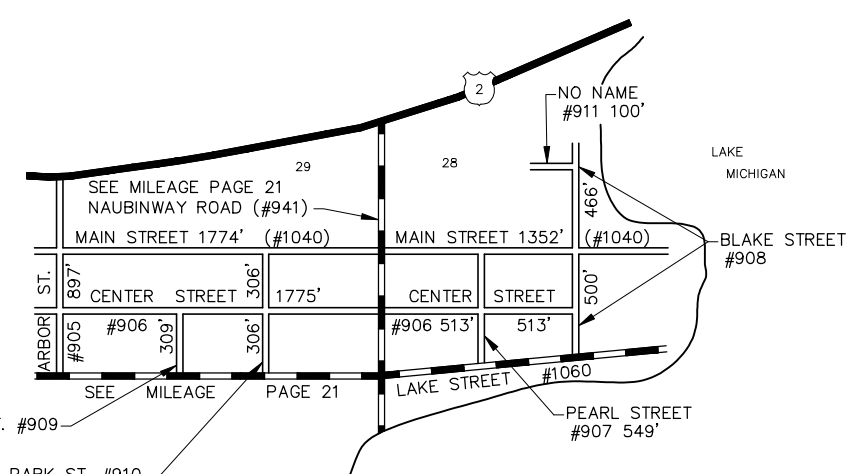
PRIMARY ROAD SYSTEM: 10.15  
 LOCAL ROAD SYSTEM: 3.46

POLITICAL TWP.	PRIMARY	LOCAL
GARFIELD TOWNSHIP	10.15	3.46
TOTAL	10.15	3.46



NO SCALE

MACKINAC COUNTY - 49  
 T 43 N - R 9 W  
 GARFIELD TOWNSHIP  
 PAGE 21



**LEGEND**

- COUNTY LINE
- CORPORATE LIMITS
- STATE TRUNKLINE
- COUNTY PRIMARY
- COUNTY LOCAL
- ADJACENT COUNTY
- CITY OR VILLAGE STREET

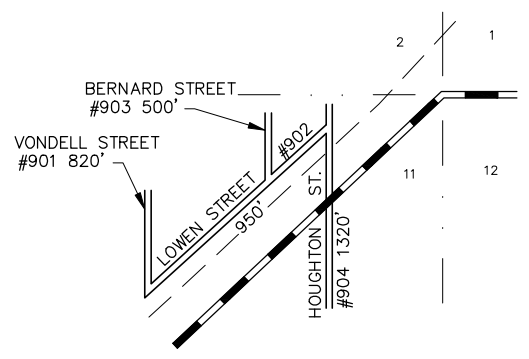
PRIMARY ROAD SYSTEM: 0.00  
 LOCAL ROAD SYSTEM: 2.46

POLITICAL TWP.	PRIMARY	LOCAL
GARFIELD TOWNSHIP	0.00	2.46
TOTAL	0.00	2.46



SEE MILEAGE PAGE 21  
 CHURCH ST. #909  
 PARK ST. #910

9360' = 1.78 MILES  
 DETAIL 1  
 FROM PAGE 21



3590' = 0.68 MILES  
 DETAIL 2  
 FROM PAGE 21

MACKINAC COUNTY - 49  
 T 43 N - R 9 W  
 GARFIELD TOWNSHIP  
 PAGE 21-1



SEE PAGE 34

BLACK RIVER ROAD  
#832 0.98

LIVERMORE ROAD  
#838 0.25  
HIAWATHA TRAIL #930 SEE P. 34 FOR MILEAGE

SEE PAGE 21

HOG ISLAND ROAD #830 SEE P. 23 FOR MILEAGE

SEE PAGE 23

T42N | T43N

**LEGEND**

- COUNTY LINE
- CORPORATE LIMITS
- STATE TRUNKLINE
- COUNTY PRIMARY
- COUNTY LOCAL
- ADJACENT COUNTY
- CITY OR VILLAGE
- STREET

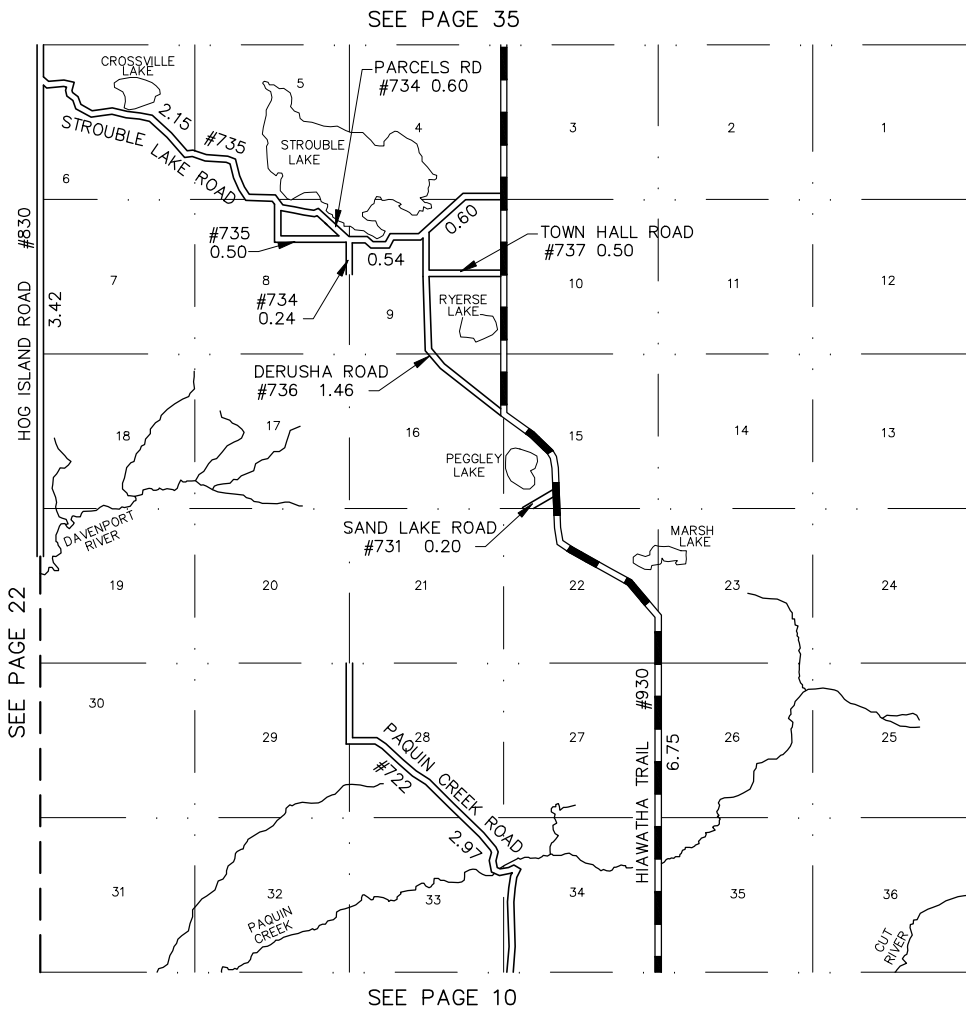
PRIMARY ROAD SYSTEM: 7.10  
 LOCAL ROAD SYSTEM: 14.22

POLITICAL TWP.	PRIMARY	LOCAL
HUDSON TOWNSHIP	7.10	14.22
TOTAL	7.10	14.22



NO SCALE

MACKINAC COUNTY - 49  
 T 42, 43 N - R 8 W  
 HUDSON TOWNSHIP  
 PAGE 22



**LEGEND**

- COUNTY LINE
- CORPORATE LIMITS
- STATE TRUNKLINE
- COUNTY PRIMARY
- COUNTY LOCAL
- ADJACENT COUNTY
- CITY OR VILLAGE STREET

PRIMARY ROAD SYSTEM: 6.75

LOCAL ROAD SYSTEM: 13.18

POLITICAL TWP.	PRIMARY	LOCAL
HENDRICKS TOWNSHIP	6.75	13.18
TOTAL	6.75	13.18











MACKINAC COUNTY – 49

T 43 N – R 7 W

HENDRICKS TOWNSHIP

PAGE 23

**LEGEND**

- COUNTY LINE 
- CORPORATE LIMITS 
- STATE TRUNKLINE 
- COUNTY PRIMARY 
- COUNTY LOCAL 
- ADJACENT COUNTY 
- CITY OR VILLAGE 
- STREET 

PRIMARY ROAD SYSTEM: 0.00 MILES

LOCAL ROAD SYSTEM: 0.00 MILES

POLITICAL TWP.	PRIMARY	LOCAL
MORAN TOWNSHIP	0.00	0.00
TOTAL	0.00	0.00



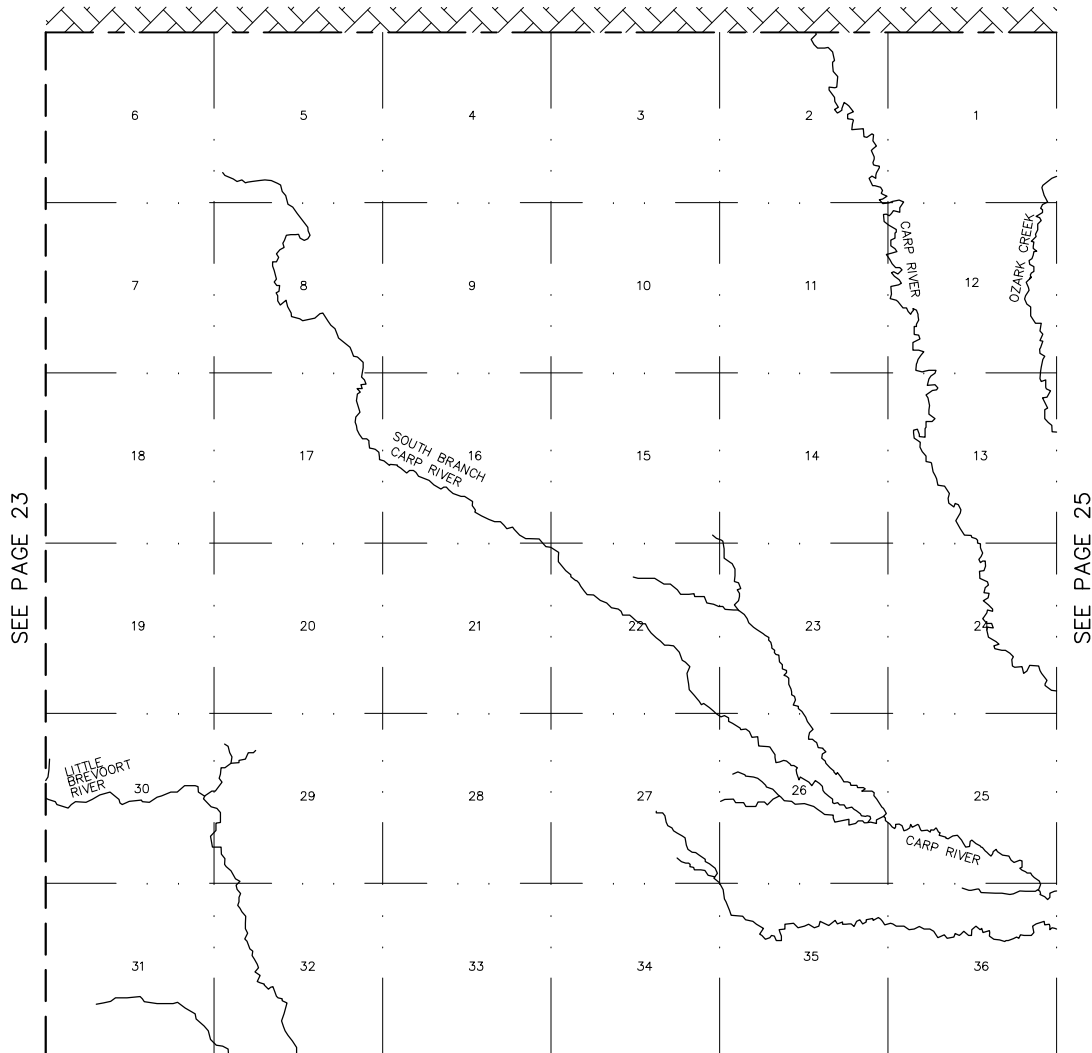
NO SCALE

MACKINAC COUNTY – 49

T 43 N R 6 W

MORAN TOWNSHIP

PAGE 24



SEE PAGE 23

SEE PAGE 25

MORAN TOWNSHIP | BREVORT TOWNSHIP

**LEGEND**

- COUNTY LINE
- CORPORATE LIMITS
- STATE TRUNKLINE
- COUNTY PRIMARY
- COUNTY LOCAL
- ADJACENT COUNTY
- CITY OR VILLAGE STREET

PRIMARY ROAD SYSTEM: 0.00 MILES

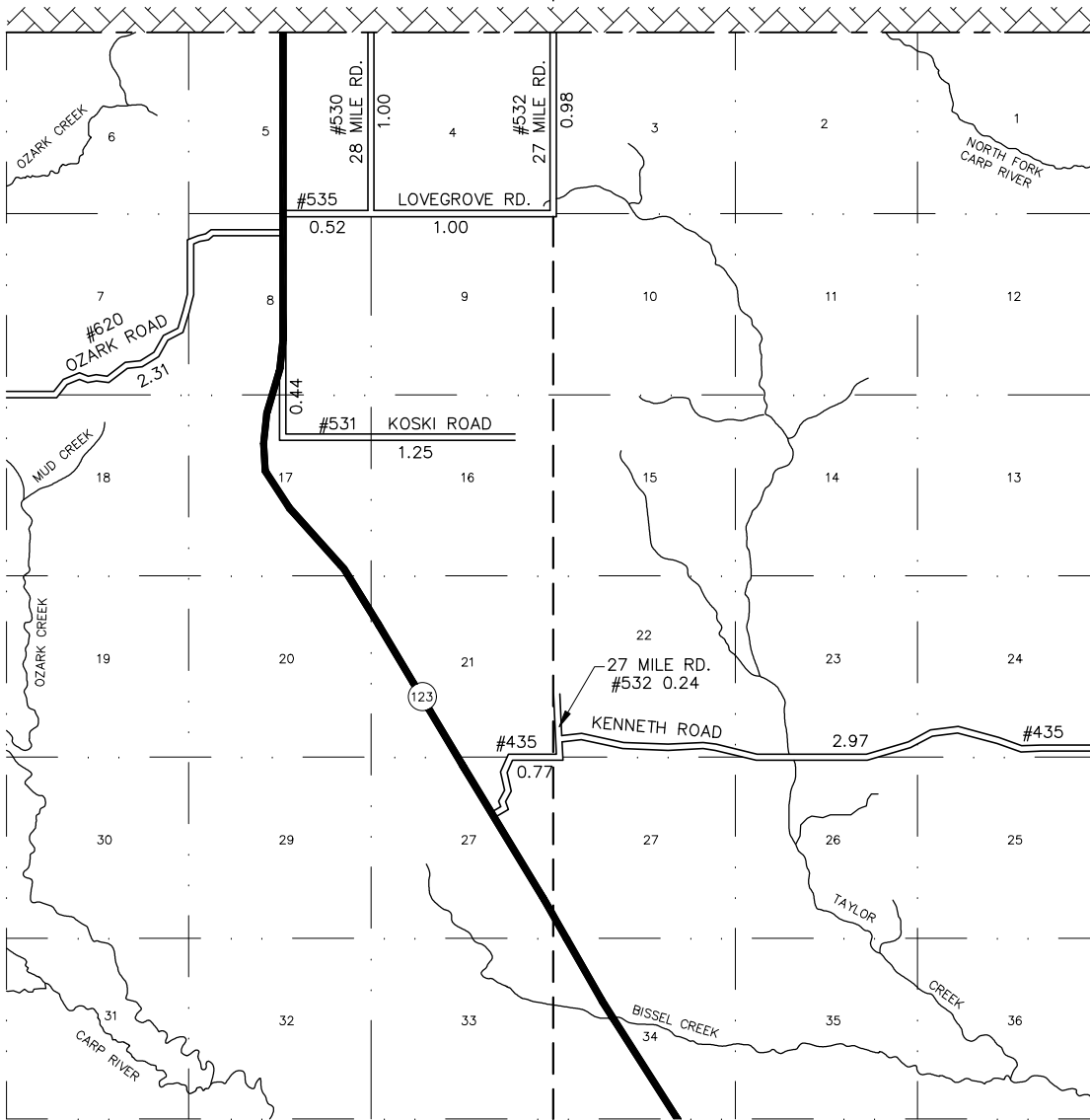
LOCAL ROAD SYSTEM: 11.48 MILES

POLITICAL TWP.	PRIMARY	LOCAL
BREVORT TOWNSHIP	0.00	3.95
MORAN TOWNSHIP	0.00	7.53
<b>TOTAL</b>	<b>0.00</b>	<b>11.48</b>



SEE PAGE 24

SEE PAGE 26

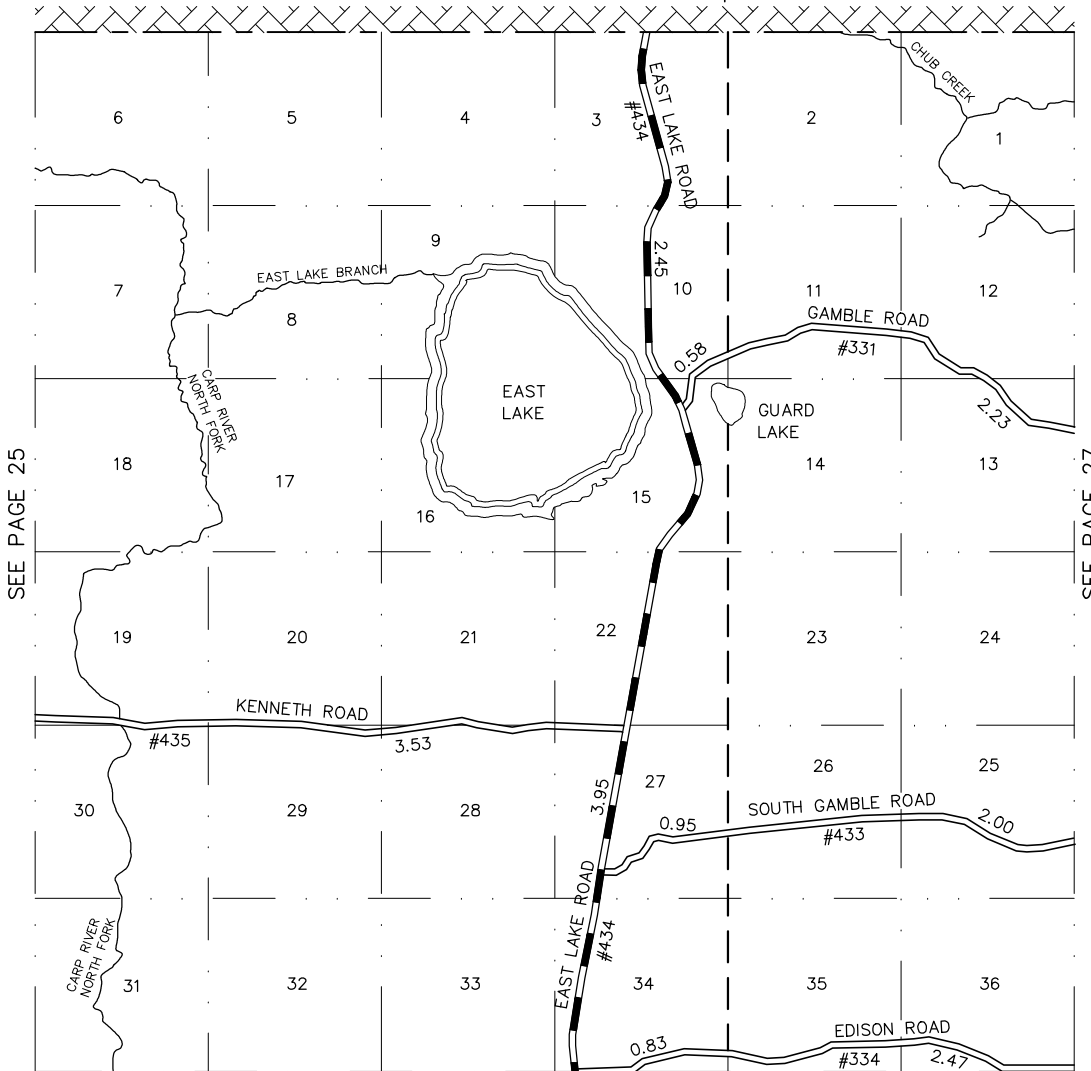


SEE PAGE 12

MACKINAC COUNTY - 49  
 T 43 N - R 5 W  
 BREVORT & MORAN TOWNSHIPS  
 PAGE 25



BREVORT TOWNSHIP | ST. IGNACE TOWNSHIP



SEE PAGE 25

SEE PAGE 27

SEE PAGE 13

BREVORT TOWNSHIP | ST. IGNACE TOWNSHIP

**LEGEND**

- COUNTY LINE
- CORPORATE LIMITS
- STATE TRUNKLINE
- COUNTY PRIMARY
- COUNTY LOCAL
- ADJACENT COUNTY
- CITY OR VILLAGE STREET

PRIMARY ROAD SYSTEM: 6.40 MILES

LOCAL ROAD SYSTEM: 12.59 MILES

POLITICAL TWP.	PRIMARY	LOCAL
BREVORT TOWNSHIP	6.40	5.89
ST. IGNACE TOWNSHIP	0.00	6.70
TOTAL	6.40	12.59



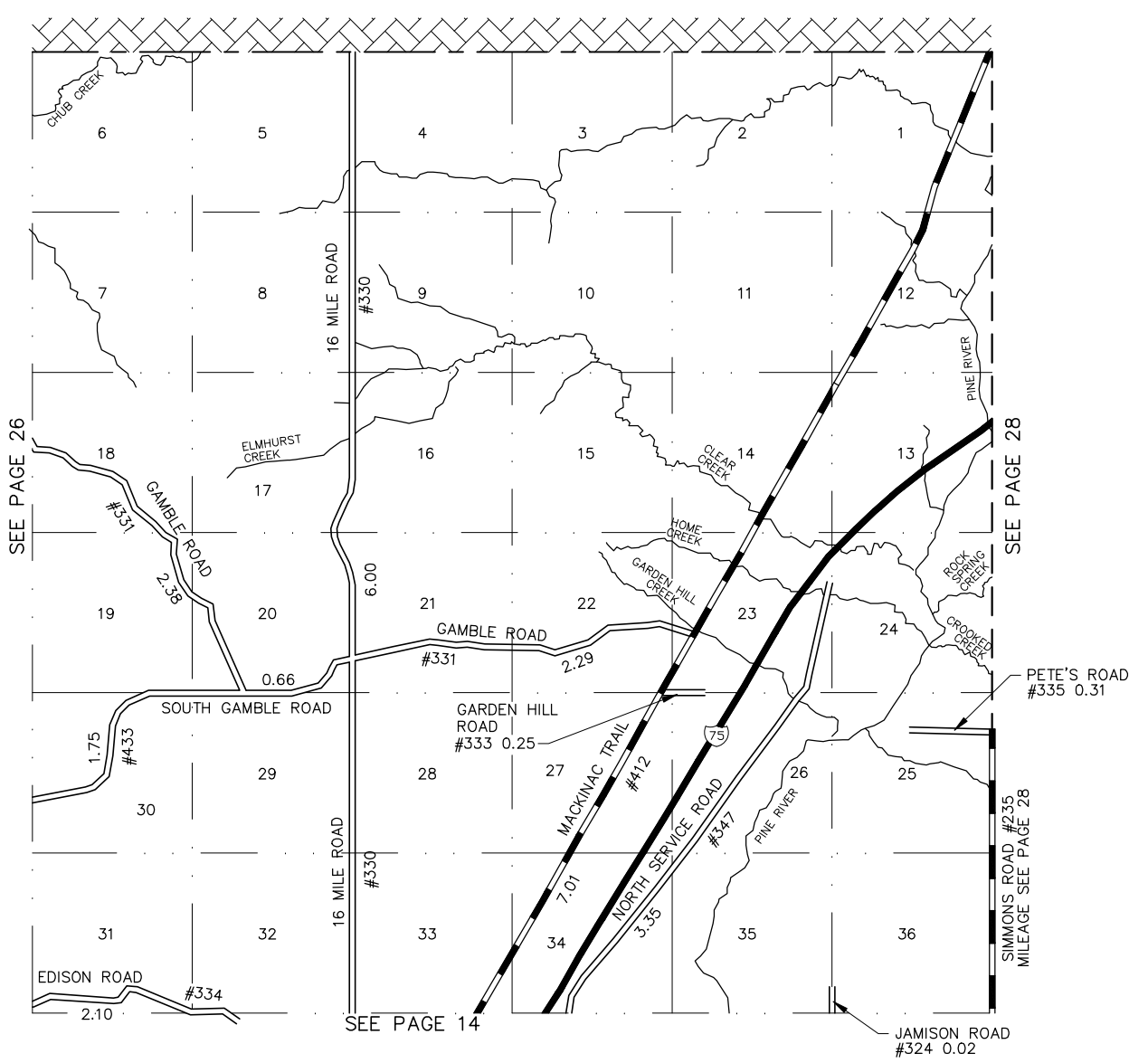
NO SCALE

MACKINAC COUNTY – 49

T 43 N – R 4 W

BREVORT & ST. IGNACE TOWNSHIPS

PAGE 26

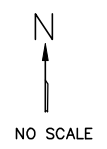


**LEGEND**

- COUNTY LINE
- CORPORATE LIMITS
- STATE TRUNKLINE
- COUNTY PRIMARY
- COUNTY LOCAL
- ADJACENT COUNTY
- CITY OR VILLAGE STREET

PRIMARY ROAD SYSTEM: 7.01 MILES  
 LOCAL ROAD SYSTEM: 19.11 MILES

POLITICAL TOWNSHIP	PRIMARY	LOCAL
ST. IGNACE TOWNSHIP	7.01	19.11
TOTAL	7.01	19.11



MACKINAC COUNTY - 49  
 T 43 N R 3 W  
 ST. IGNACE TOWNSHIP  
 PAGE 27

SEE PAGE 26

SEE PAGE 28

SEE PAGE 14

SEE PAGE 28

JAMISON ROAD #324 0.02

PETE'S ROAD #335 0.31

CHUBB CREEK

ELMHURST CREEK

CLEAR CREEK

HOME CREEK

GARDEN HILL CREEK

ROCK CREEK

CROOKED CREEK

PINE RIVER

GAMBLE ROAD #351 2.38

SOUTH GAMBLE ROAD

GAMBLE ROAD #331 2.29

GARDEN HILL ROAD #333 0.25

MACKINAC TRAIL #412 7.01

NORTH SERVICE ROAD #347 3.35

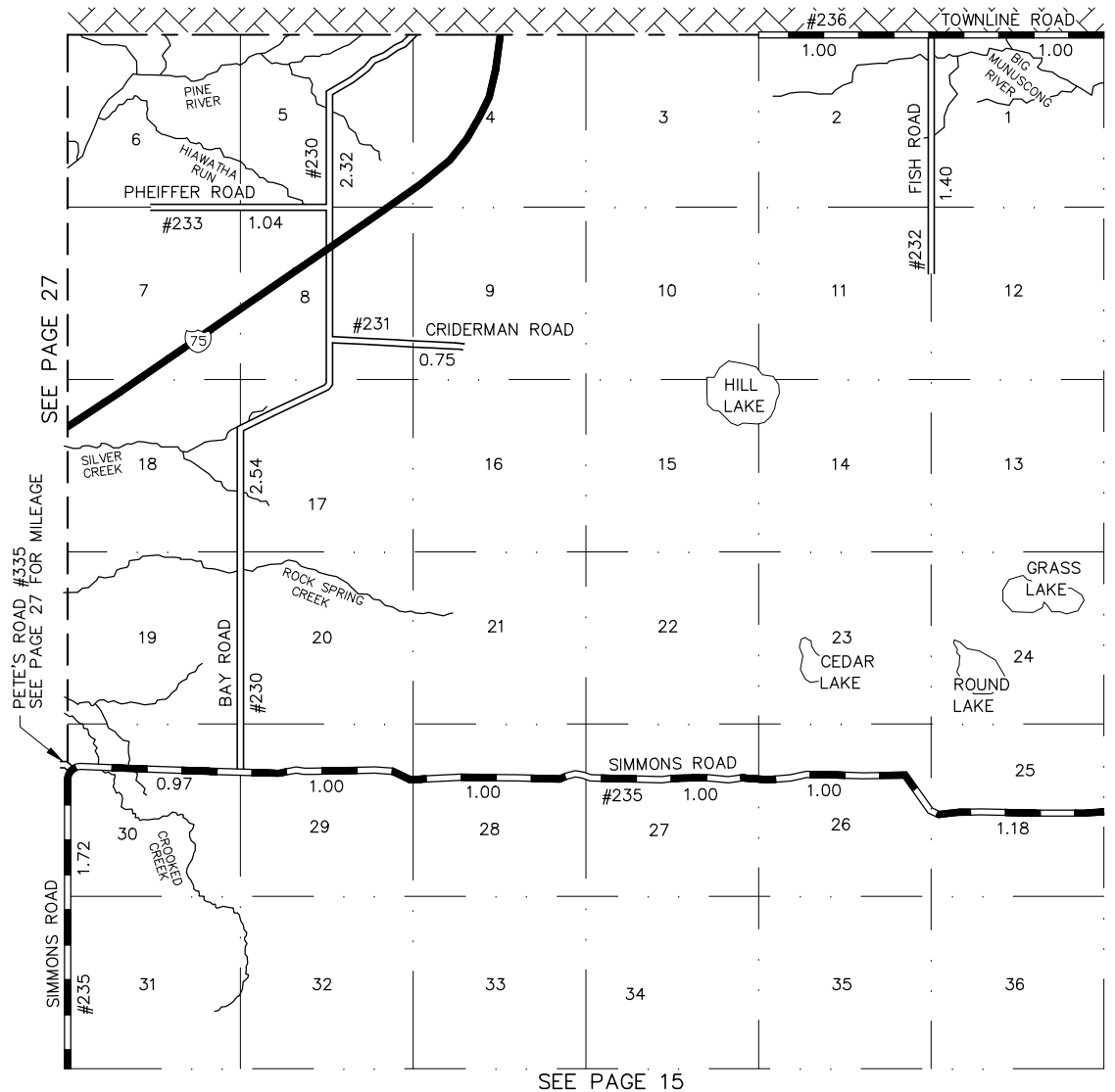
EDISON ROAD #334 2.10

16 MILE ROAD #330 6.00

16 MILE ROAD #330

SIMONS ROAD #235

MILEAGE SEE PAGE 28

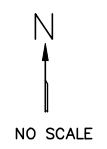


**LEGEND**

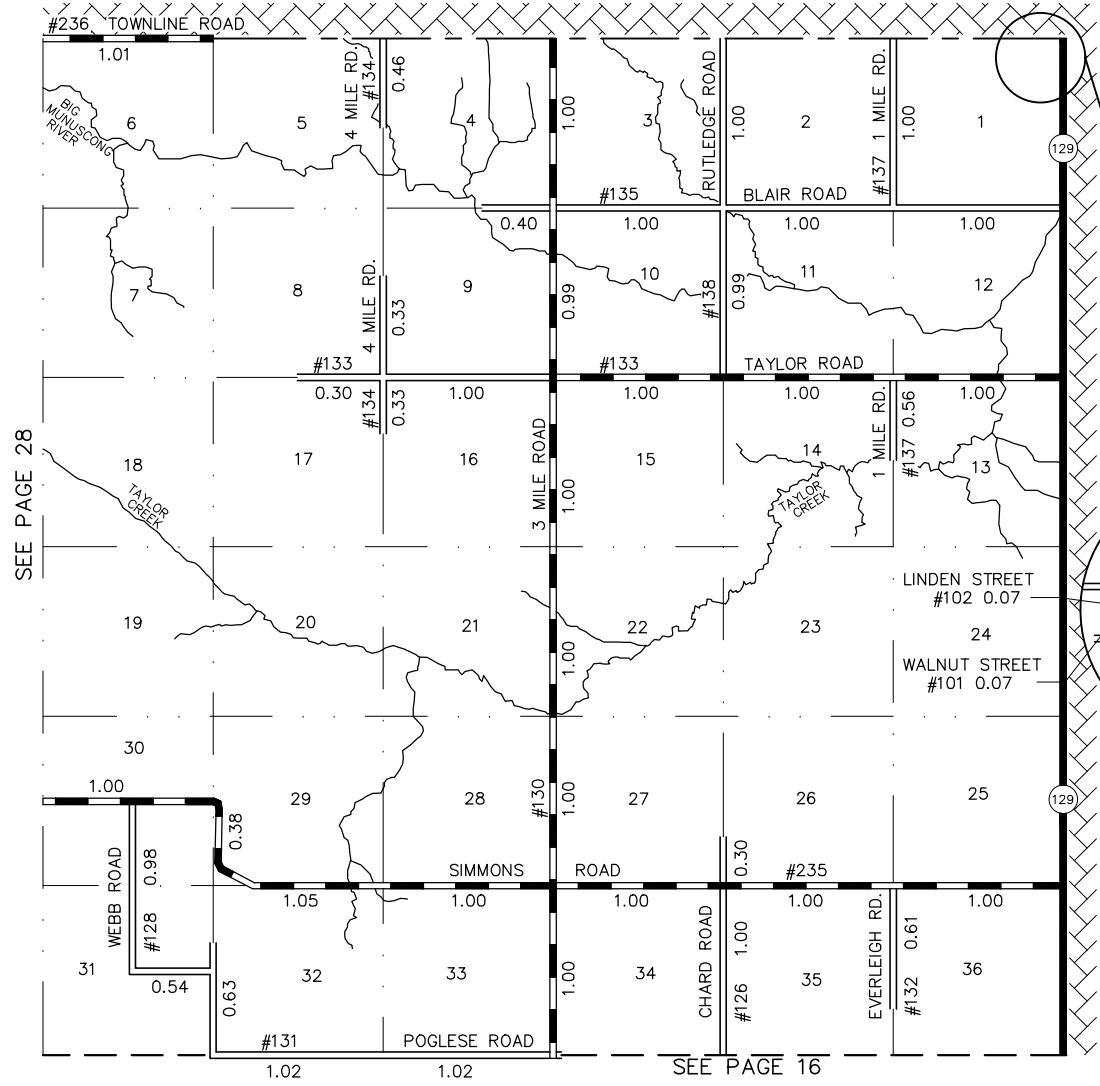
- COUNTY LINE
- CORPORATE LIMITS
- STATE TRUNKLINE
- COUNTY PRIMARY
- COUNTY LOCAL
- ADJACENT COUNTY
- CITY OR VILLAGE STREET

PRIMARY ROAD SYSTEM: 9.87 MILES  
 LOCAL ROAD SYSTEM: 8.05 MILES

POLITICAL TOWNSHIP	PRIMARY	LOCAL
MARQUETTE TOWNSHIP	9.87	8.05
TOTAL	9.87	8.05



MACKINAC COUNTY — 49  
 T 43 N R 2 W  
 MARQUETTE TOWNSHIP  
 PAGE 28



SEE PAGE 28

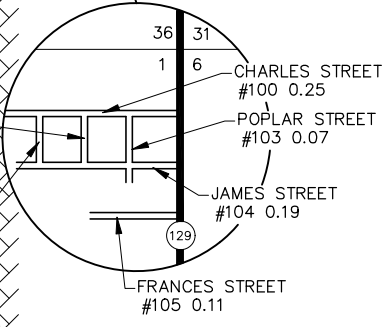
SEE PAGE 16

**LEGEND**

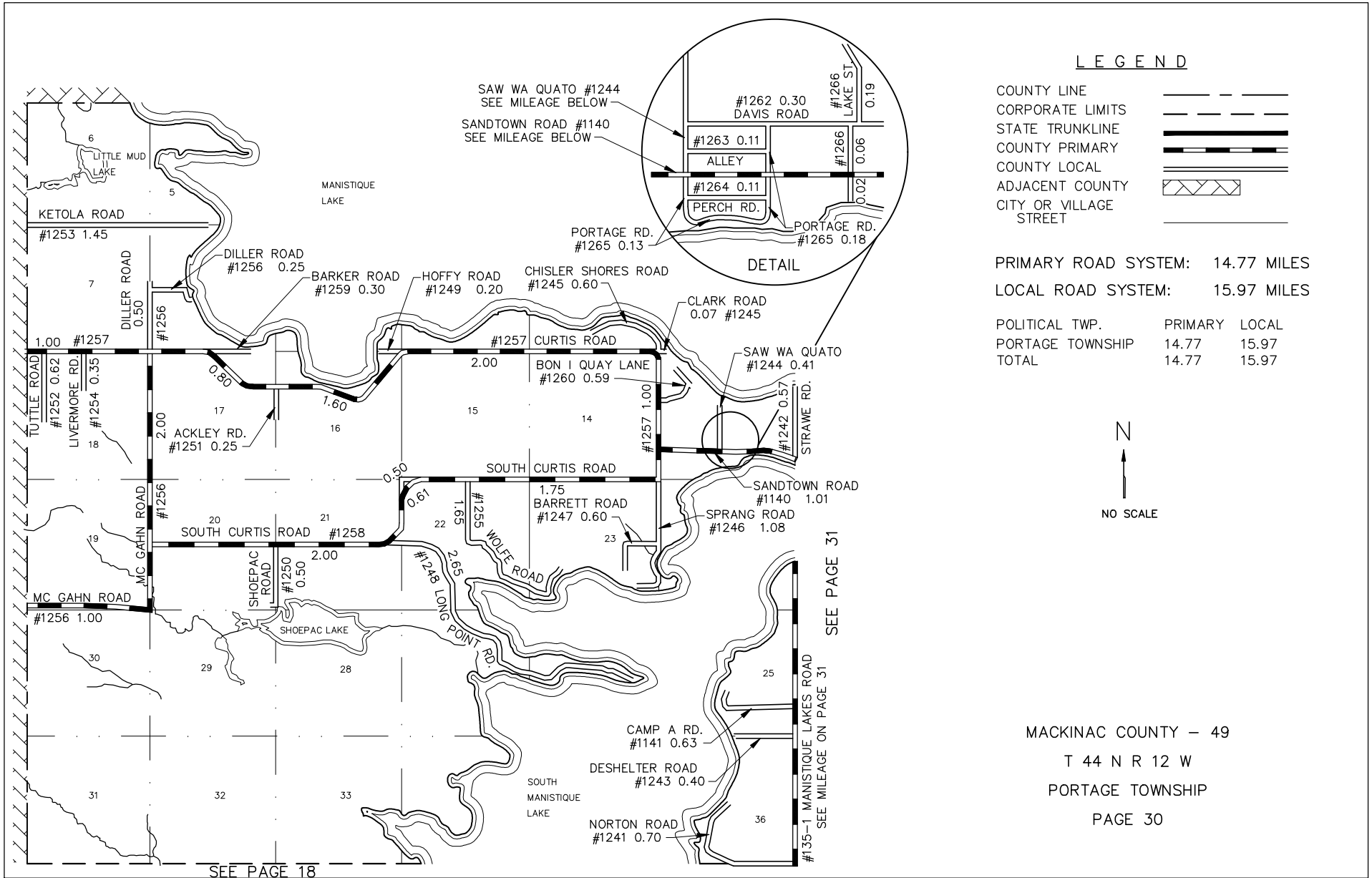
- COUNTY LINE
- CORPORATE LIMITS
- STATE TRUNKLINE
- COUNTY PRIMARY
- COUNTY LOCAL
- ADJACENT COUNTY
- CITY OR VILLAGE STREET

PRIMARY ROAD SYSTEM: 16.43 MILES  
 LOCAL ROAD SYSTEM: 16.23 MILES

POLITICAL TOWNSHIP	PRIMARY	LOCAL
MARQUETTE TOWNSHIP	16.43	16.23
TOTAL	16.43	16.23



MACKINAC COUNTY - 49  
 T 43 N R 1 W  
 MARQUETTE TOWNSHIP  
 PAGE 29



**LEGEND**

- COUNTY LINE
- CORPORATE LIMITS
- STATE TRUNKLINE
- COUNTY PRIMARY
- COUNTY LOCAL
- ADJACENT COUNTY
- CITY OR VILLAGE STREET

PRIMARY ROAD SYSTEM: 14.77 MILES

LOCAL ROAD SYSTEM: 15.97 MILES

POLITICAL TWP.	PRIMARY	LOCAL
PORTAGE TOWNSHIP	14.77	15.97
TOTAL	14.77	15.97

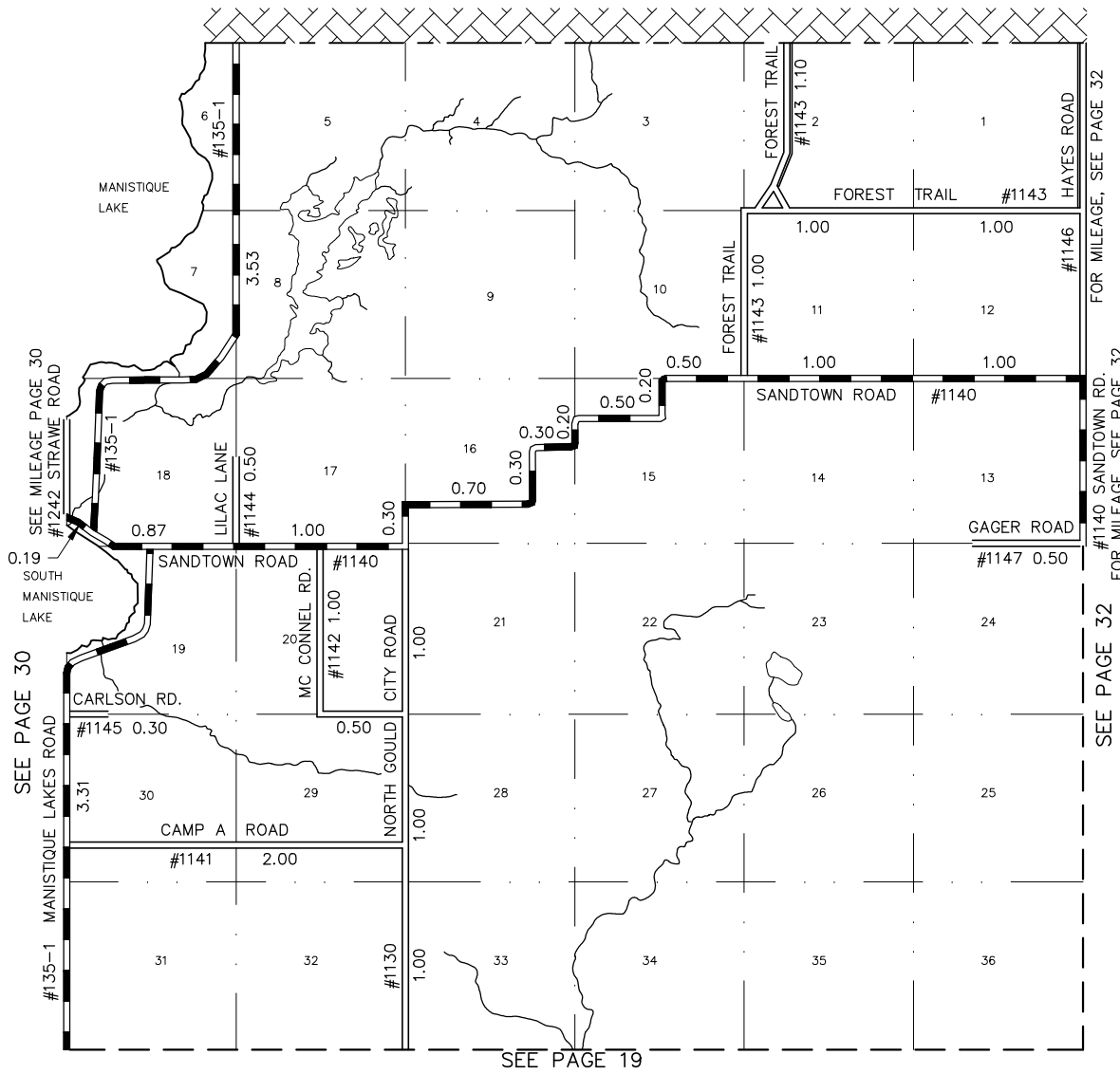


MACKINAC COUNTY - 49  
 T 44 N R 12 W  
 PORTAGE TOWNSHIP  
 PAGE 30

SEE PAGE 18

SEE PAGE 31

#135-1 MANISTIQUE LAKES ROAD  
 SEE MILEAGE ON PAGE 31



LEGEND

- COUNTY LINE ———|———|———
- CORPORATE LIMITS -----
- STATE TRUNKLINE ————|————|————
- COUNTY PRIMARY ———|———|———
- COUNTY LOCAL ————|————|————
- ADJACENT COUNTY ▨▨▨▨▨▨
- CITY OR VILLAGE STREET ———|———

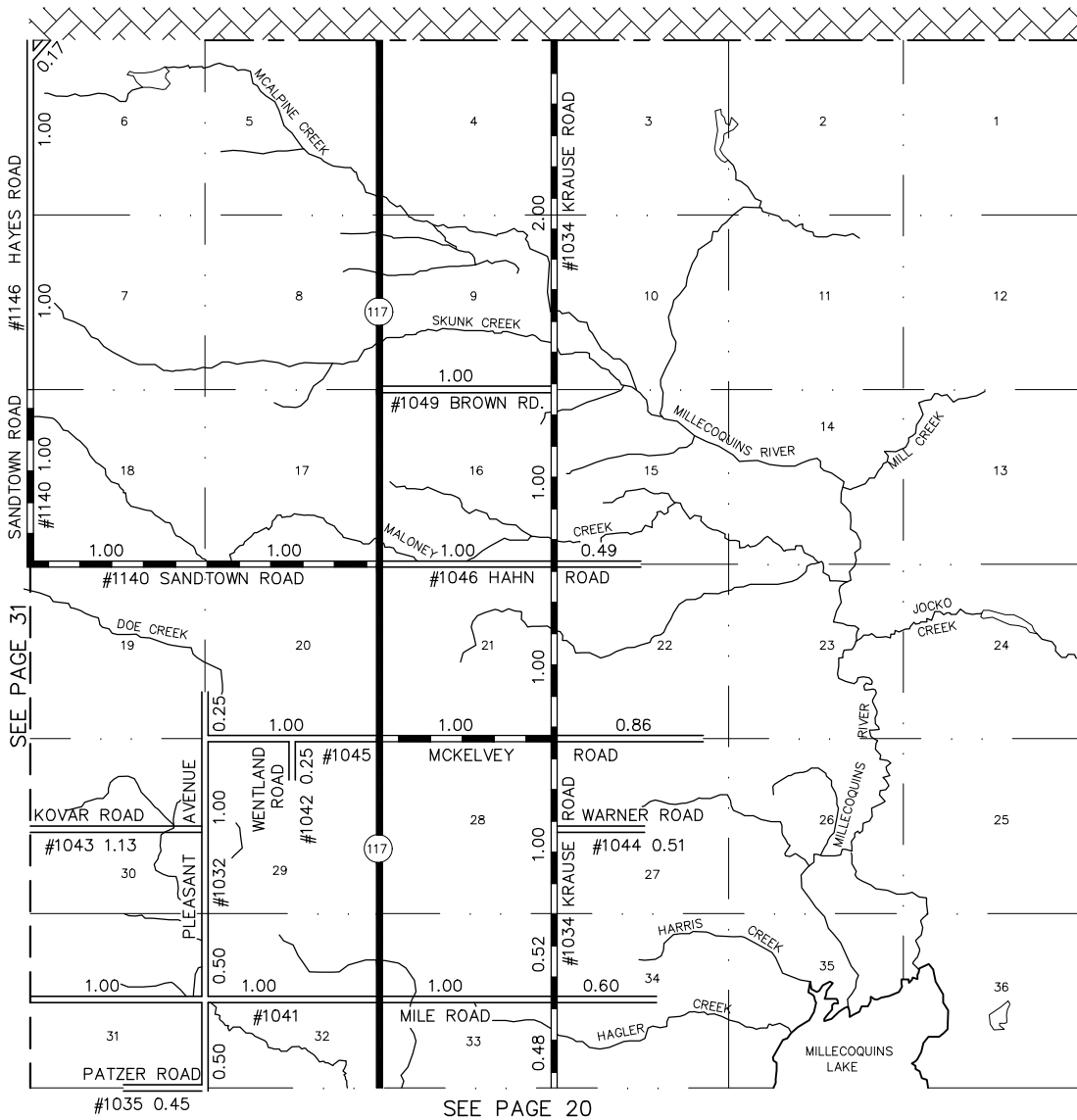
PRIMARY ROAD SYSTEM: 13.90

LOCAL ROAD SYSTEM: 11.90 MILES

POLITICAL TWP.	PRIMARY	LOCAL
PORTAGE TOWNSHIP	13.90	11.90
TOTAL	13.90	11.90



MACKINAC COUNTY - 49  
 T 44 N R 11 W  
 PORTAGE TOWNSHIP  
 PAGE 31



**LEGEND**

- COUNTY LINE
- CORPORATE LIMITS
- STATE TRUNKLINE
- COUNTY PRIMARY
- COUNTY LOCAL
- ADJACENT COUNTY
- CITY OR VILLAGE
- STREET

PRIMARY ROAD SYSTEM: 10.00 MILES  
 LOCAL ROAD SYSTEM: 14.71 MILES

POLITICAL TWP.	PRIMARY	LOCAL
GARFIELD TOWNSHIP	10.00	14.71
TOTAL	10.00	14.71

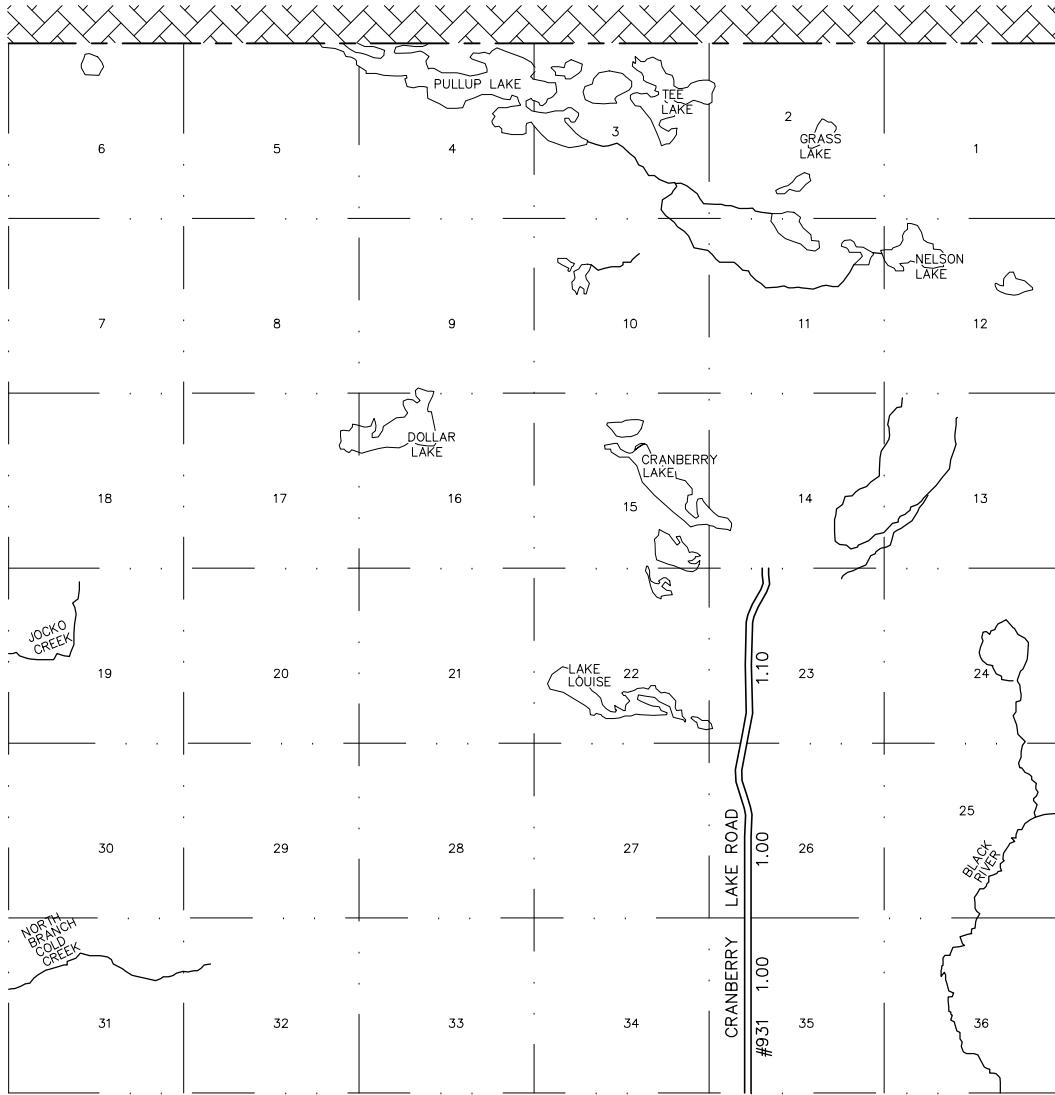


MACKINAC COUNTY – 49  
 T 44 N R 10 W  
 GARFIELD TOWNSHIP  
 PAGE 32

SEE PAGE 31

SEE PAGE 33

SEE PAGE 20



SEE PAGE 32

SEE PAGE 34

SEE PAGE 21

**LEGEND**

- COUNTY LINE
- CORPORATE LIMITS
- STATE TRUNKLINE
- COUNTY PRIMARY
- COUNTY LOCAL
- ADJACENT COUNTY
- CITY OR VILLAGE
- STREET

PRIMARY ROAD SYSTEM: 0.00 MILES

LOCAL ROAD SYSTEM: 3.10 MILES

POLITICAL TWP.	PRIMARY	LOCAL
GARFIELD TOWNSHIP	0.00	3.10
TOTAL	0.00	3.10



NO SCALE

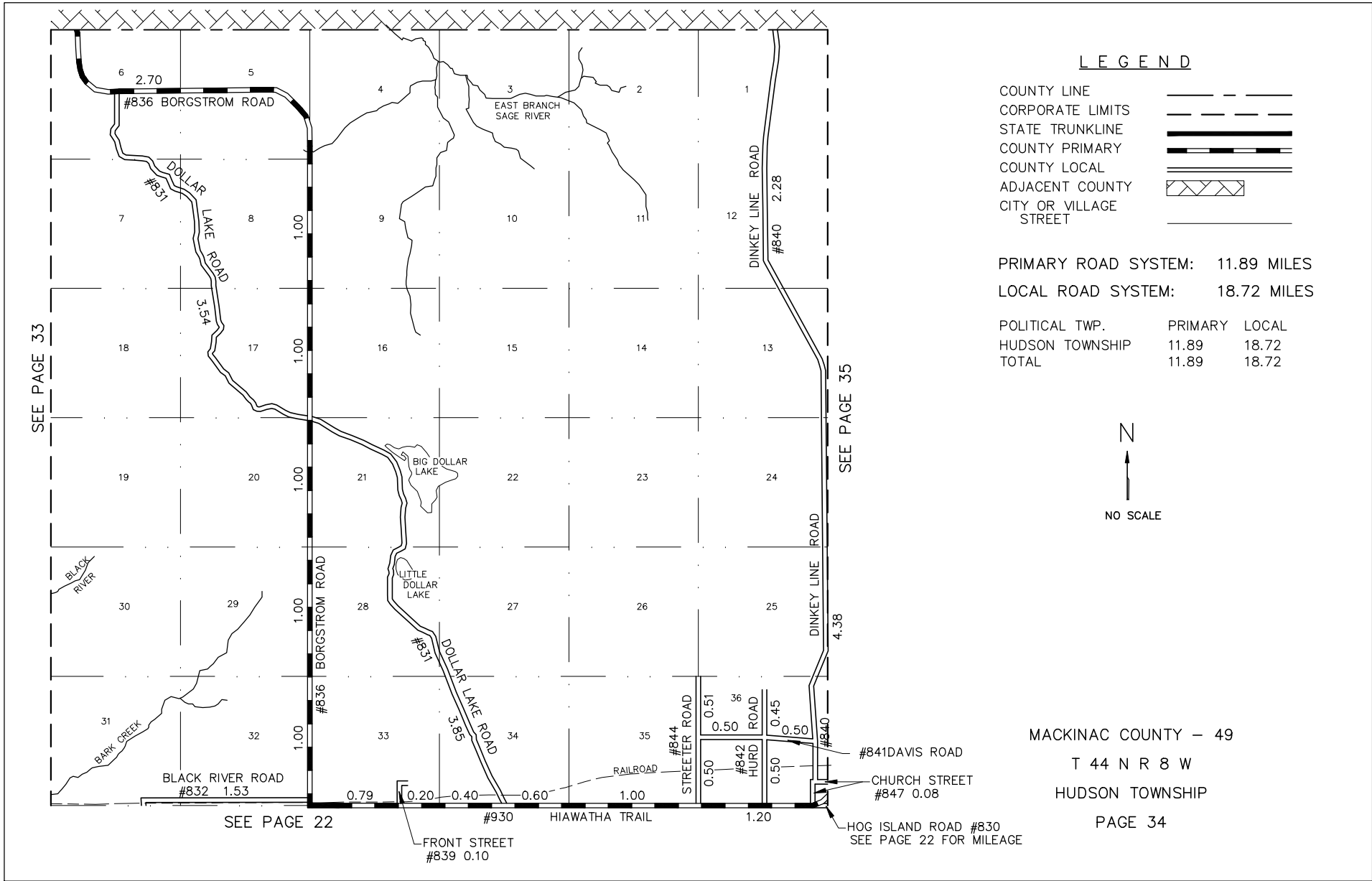
MACKINAC COUNTY – 49

T 44 N R 9 W






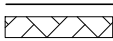

GARFIELD TOWNSHIP

PAGE 33





**LEGEND**

- COUNTY LINE 
- CORPORATE LIMITS 
- STATE TRUNKLINE 
- COUNTY PRIMARY 
- COUNTY LOCAL 
- ADJACENT COUNTY 
- CITY OR VILLAGE STREET 

PRIMARY ROAD SYSTEM: 11.89 MILES

LOCAL ROAD SYSTEM: 18.72 MILES

POLITICAL TWP.	PRIMARY	LOCAL
HUDSON TOWNSHIP	11.89	18.72
TOTAL	11.89	18.72

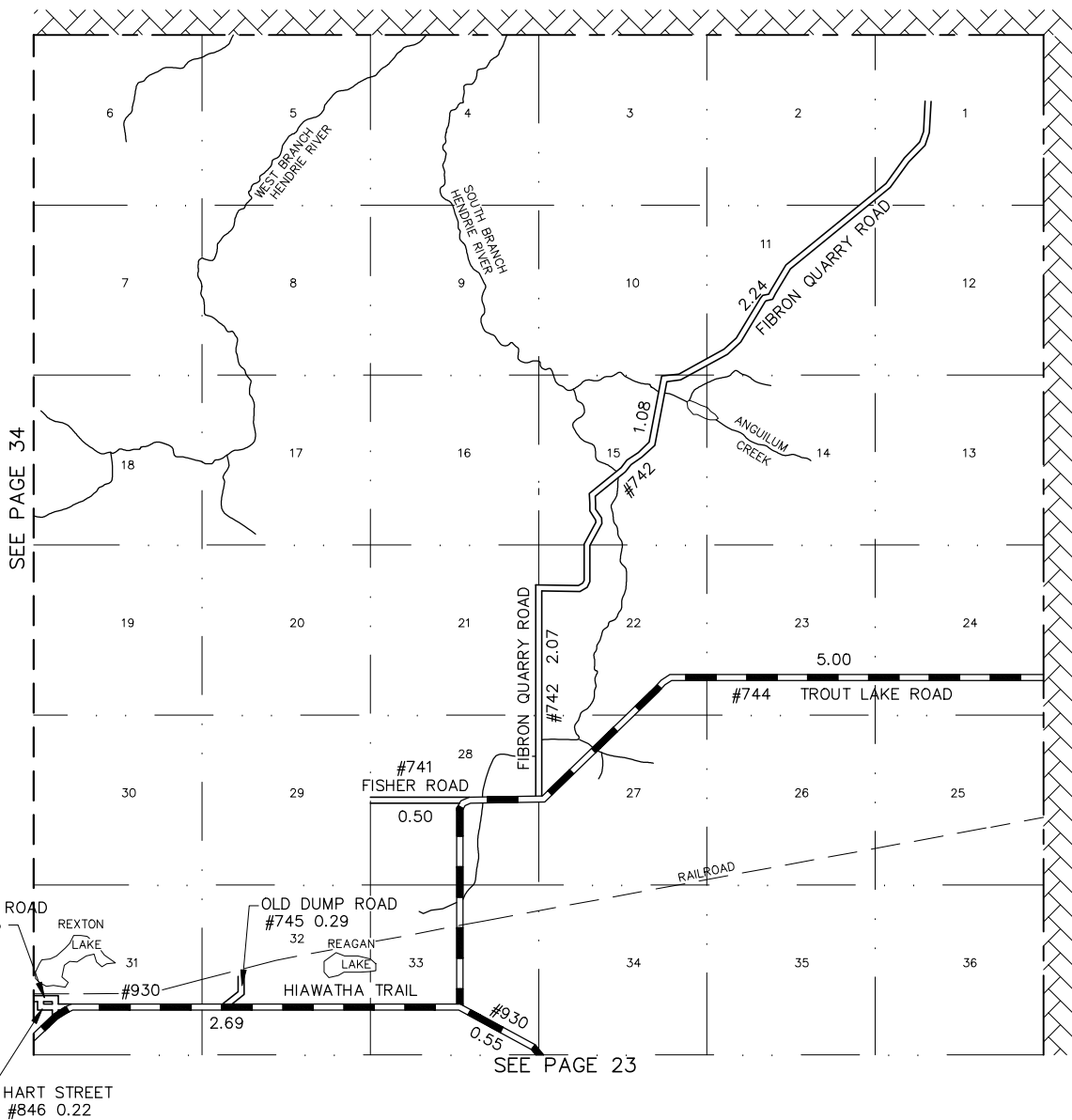


MACKINAC COUNTY – 49

T 44 N R 8 W

HUDSON TOWNSHIP

PAGE 34



SEE PAGE 34

SEE PAGE 23

LEGEND

- COUNTY LINE
- CORPORATE LIMITS
- STATE TRUNKLINE
- COUNTY PRIMARY
- COUNTY LOCAL
- ADJACENT COUNTY
- CITY OR VILLAGE
- STREET

PRIMARY ROAD SYSTEM: 8.24 MILES

LOCAL ROAD SYSTEM: 6.65 MILES

POLITICAL TWP.	PRIMARY	LOCAL
HENDRICKS TOWNSHIP	8.24	6.65
TOTAL	8.24	6.65



MACKINAC COUNTY - 49

T 44 N - R 7 W

HENDRICKS TOWNSHIP

PAGE 35